



ARYENVARSHA

PERFORMANCE DATA BOOK



ARYEN MOTORS (INDIA) P. LTD.,

SINCE 1987

CERTIFICATE

Management system as per
ISO 9001 : 2015

In accordance with TÜV INDIA procedures, it is hereby certified that

ARYEN MOTORS (INDIA) P. LTD.
128/1, Narasimhanaicken Palayam Village,
Mettupalayam Road, Coimbatore - 641 031,
India

applies a quality management system in line with the above standard for the following scope

Design, Manufacture, Supply and Service of Borewell Submersible Pumpsets and Openwell Submersible Pumpsets

Certificate Registration No. QM 09 00227 Audit Report No. Q 3703/2011	Valid until 29.05.2020 Valid from 30.05.2017 Initial Certification 30.05.2011
--	--

Certification Body
at TÜV INDIA PVT. LTD.

Issue **16.03.2017**
Place : **Mumbai**

This certification was conducted in accordance with the TÜV INDIA auditing and certification procedures and is subject to regular surveillance audits.

TUV India Pvt. Ltd., 801, Raneja Plaza - 1, L.B.S. Marg, Ghatkopar (W), Mumbai - 400 086, India www.tuv-nord.com/in

Tamilnadu - State Approved Brand

BY RPAD

TAMILNADU WATER SUPPLY AND DRAINAGE BOARD
Phone No: 2510522 Circle Code: 057 Fax No: 2510422
Email: seccnce@gmail.com

From
Er.K.Murugesan., M.E.,
Superintending Engineer,
TWAD Board,
Coimbatore-Nilgiris Circle,
No.4,Vilankurichi Road,
Vinobaji Nagar, Peelamedu (p),
Coimbatore-641004.

To
M/s. ARYEN MOTORS (INDIA)
PRIVATE Limited,
S.F.No.128/1, Narasimhanaickenpalayam
Mettupalayam Road,
Coimbatore - 641031.

Lr.No.21216/F.Registration (Mech)/DO-I/CNC/CBE/2016/dt.02.12.2016

Gentlemen,

Sub: TWAD Board - Coimbatore-Nilgiris Circle - Enlistment of Mechanical Registration - Registration in **Class I at State level** jurisdiction with a monetary limit Rs.25.00 lakhs and above - Registration orders -issued - Reg.

Ref: 1) M/s. ARYEN Motors (India) P.Ltd, S.F.No.128/1, Narasimhanaickenpalayam, Mettupalayam Road, Coimbatore - 641031- Lr.No.Nil/Dt.19.09.2016.
2) Superintending Engineer, TWAD Board, Coimbatore-Nilgiris Circle, Coimbatore -Cash Receipt No.21/dt.19.09.2016 for Rs.5,000/- (Rupees Five thousands only)
3) Superintending Engineer, TWAD Board, Coimbatore-Nilgiris Circle, Coimbatore -Cash Receipt No.01/dt.01.12.2016 for Rs.50,000/- (Rupees Fifty thousand only) towards Registration fees.

The Superintending Engineer, TWAD Board, Coimbatore-Nilgiris Circle, Coimbatore is pleased to Register your status of **Class I with a monetary limit Rs.25.00 lakhs and above at State level jurisdiction** as a Mechanical contractor for Supply, Delivery and erection of all type of Pump sets and all other related works in TWAD Board subject to the following conditions.

1. This Registration does not confer on you any right to claim for the award of works in contracts (or) for Supply, Delivery and erection of all type of Pump sets and all other related works, but makes you only eligible to apply and tender for the works in Circle level which will be decided at the sole discretion of the officers competent to decide the same in accordance with the rules in force.

GOVERNMENT OF ANDHRA PRADESH

BUILDINGS - SoR : 2018-2019

Andhra Pradesh - State Approved Brand

Proc. No. ENC(B)/DEE-1/AEE1/SoR : 2018-19 Dt. 01.07.2018

GOVERNMENT OF TELANGANA

COMMON SCHEDULE OF RATES AS PER T.S. REVISED STANDARD DATA FOR THE YEAR 2018-19 (Effective from 1st June, 2018)

BOARD OF CHIEF ENGINEERS

Telangana - State Approved Brand

Proc. No. ENC/IW/P&M/EE/DEE-2/AEE.4/SOR 18-19/Vol.I Dt. 01.07.2018





CONTENTS

150mm (V6) Submersible Pumpsets	1
125mm (V5) Submersible Pumpsets	
100mm (V4) Submersible Pumpsets	
Openwell Submersible Pumpsets	
Monoblock Pumpsets	
Self Priming Pumpsets	
Special Pumpsets	
Cable Selection Chart	
Discharge Output Chart	
Friction Loss Chart	



ABOUT ARYEN

ARYEN MOTORS INDIA P.LTD., engaged in manufacturing a wide range of pumps and motors for the past three decades. We do cutting edge R & D and have unparalleled commitment to excellence. Our area of concentration are domestic and agriculture pumpsets namely Vertical and Horizontal Open well Submersible Pumps, 4", 5" and 6" Inch Bore well Submersible pumpsets, Monosets.etc.,

Our Company always keeps pace with the changing scenario of various field conditions, adopting latest development in design and manufacturing technique, with outstanding solutions every time. Every product we manufacture undergoes performance testing to suit the field requirements. At **ARYEN**, we believe firmly that our customers are our asset that constantly drives us to achieve stratospheric heights.

QUALITY POLICY

To be a Noble brand providing energy efficient pumps, to all our customers in our chosen markets by,

- ★ Continual improvement in products, process & our quality management system.
- ★ Committed to meet the statutory & regulatory requirements.
- ★ By our dedicated efforts in involving and motivating our employees.

ARYEN MOTORS was established in the year 2002 and C.R.Shanmughasundaram and S.Saikrishnan are the Directors of the company.

Mr.C.R.Shanmughasundaram M.E., is the Managing Director of our company who has more than 40 years of experience in Mechanical & Electrical, Engg fields. His Portfolios are Quality, Finance, R&D and general administration.

He has also held various honorary posts like:

- PRESIDENT SIEMA from 2006 to 2008
- PRESIDENT SI'TARC from 2009 to 2011
- VICE PRESIDENT COINDIA from 2012 to 2014

Mr. S.Saikrishnan B.E., (S.W.Prod) graduated from PSG College of Technology has been taking care of the day to day activities in Purchase, Production & Marketing. He is ably assisted by sincere & well trained staff in all the departments for expertise.



PRODUCT RANGE



6" Borewell Submersible Pumpsets

Radial Flow - **AR Series**

Range - Upto 25 HP

Head - Upto 1450 Feet

6" Borewell Submersible Pumpsets

Mixed Flow - **AM Series**

Range - Upto 25 HP

Discharge - Upto 72,000 lph



6" High Head SS Pumpsets

50 Feet - **AR 50 Series**

Range - Upto 25 HP

Discharge - Upto 49,000 lph



4" Borewell Submersible Pumpsets

TS / TT Series

Range - Upto 5 HP

Head - Upto 1300 Feet

5" Motor Coupled with 4" Pumps

HDJ, HH, HDC Series

Range - Upto 10 HP

Head - Upto 1500 Feet



Horizontal Openwell Submersible Pumpsets

AQUA Series

Range - 3 HP & 5 HP

Discharge - Upto 75,000 lph



**Horizontal Openwell
Submersible Pumpsets**

TURBO Series

Range - 5 HP to 10 HP
Discharge - Upto 1,00,000 lph

**Vertical Openwell
Submersible Pumpsets**

AVW Series - Single Shaft Models

Range - 3 HP to 12.5 HP
Discharge - Upto 70,000 lph



**Vertical Openwell
Submersible Pumpsets**

DAM Series - Coupled Models

Range - 10 HP to 30 HP
Discharge - Upto 1,50,000 lph



Vertical Opewell Submersible Pumpsets

AVR Series

Vertical Openwell Submersible Motor
Coupled with 6" Radial Flow Pump
Range - 3 HP to 20 HP

Vertical Opewell Submersible Pumpsets

AVM Series

Vertical Openwell Submersible Motor
Coupled with 6" Mixed Flow Pump
Range - 3 HP to 20 HP



Vertical Opewell Submersible Pumpsets

AVR - 50 Series

Vertical Openwell Submersible Motor
Coupled with 6" Radial Flow 50 Feet SS Pump
Range - 3 HP to 20 HP



Domestic Opewell Submersible Pumpsets

AWS Series

Range - 1 HP to 2 HP

Domestic Self Priming, Jet & Openwell Pumps

Self Priming VSP Series

Range - 0.5 HP & 1 HP

Shallow Well Jet ASJ Series

Range - 1 HP

Vertical Jet AVJ Series

Range - 1 HP

Horizontal Openwell ASW Series

Range - 0.5 HP & 1 HP



Domestic Monoblock Pumps

High Speed ASM Series

Range - 0.5 HP to 2 HP

Slow Speed DMA Series

Range - 0.5 HP



150mm V6 Submersible Pumpsets Radial Flow AR Series

Range : 3 HP to 25 HP

Salient Features:

Robust Construction ensuring high durability

Better Efficiency with consistent Performance

All motors are designed to start and run at low voltages

Superior Polymer Coated wire to withstand voltage fluctuations

Rotors are treated with corrosion resistant epoxy paints

All rotating components are dynamically balanced for smooth operation and long bearing life

Heavy duty Specially designed Carbon Thrust Bearing

Bearing Sleeves are precision machined for long life

Top and suction bushes are well protected from sand entry



Material of Construction:

Part Name (Motor)	Material
Motor Body	SS 304
Motor Shaft	SS AISI 410 / 420
Bush Bearing	LTB - Bronze
Thrust Bearing	AISI - Carbon
Bearing Housing	CI FG 200 / 250

Part Name (Pump)	Material
Pump Shaft	SS AISI 410
Suction Housing	CI FG 200
NRV	CI FG 200
Impeller	SS 410
Diffuser	CI FG 200

Applications:

Irrigation to Agricultural Farms

Solar Pumping Station

Drip and Sprinkler Irrigation

Industrial Water Supply

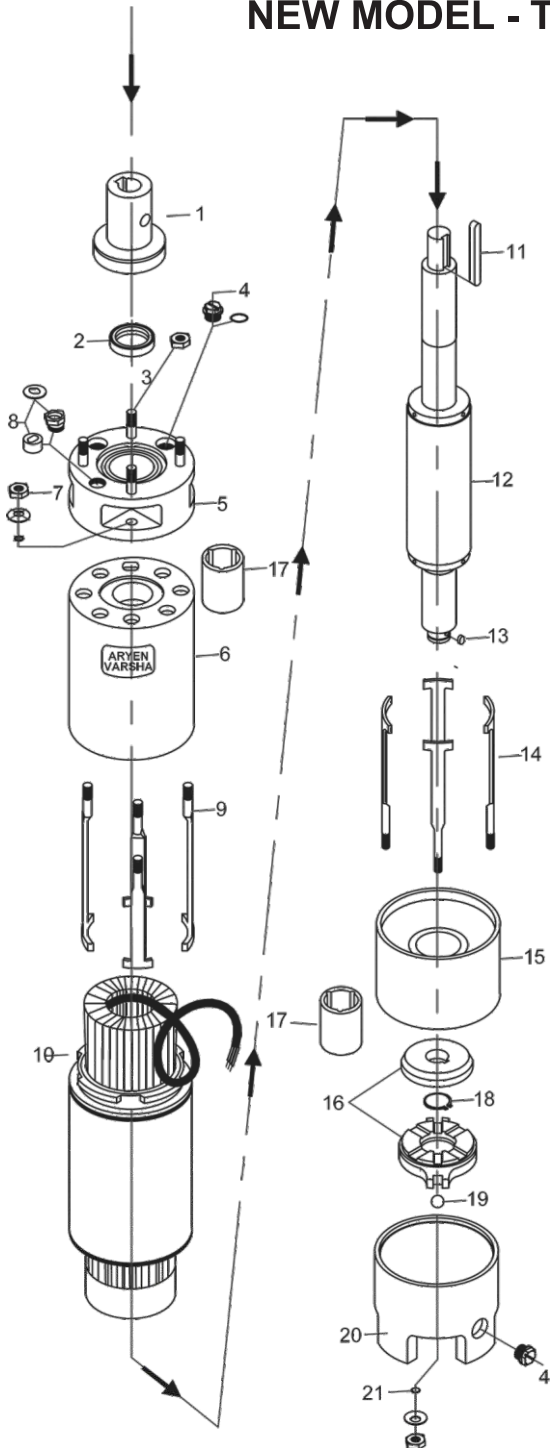
Community Water Supply

Hotels, Dairies, Cattle and Poultry Farms

V6 MOTOR

EXPLODED VIEW

NEW MODEL - TWO PART TOP HOUSING

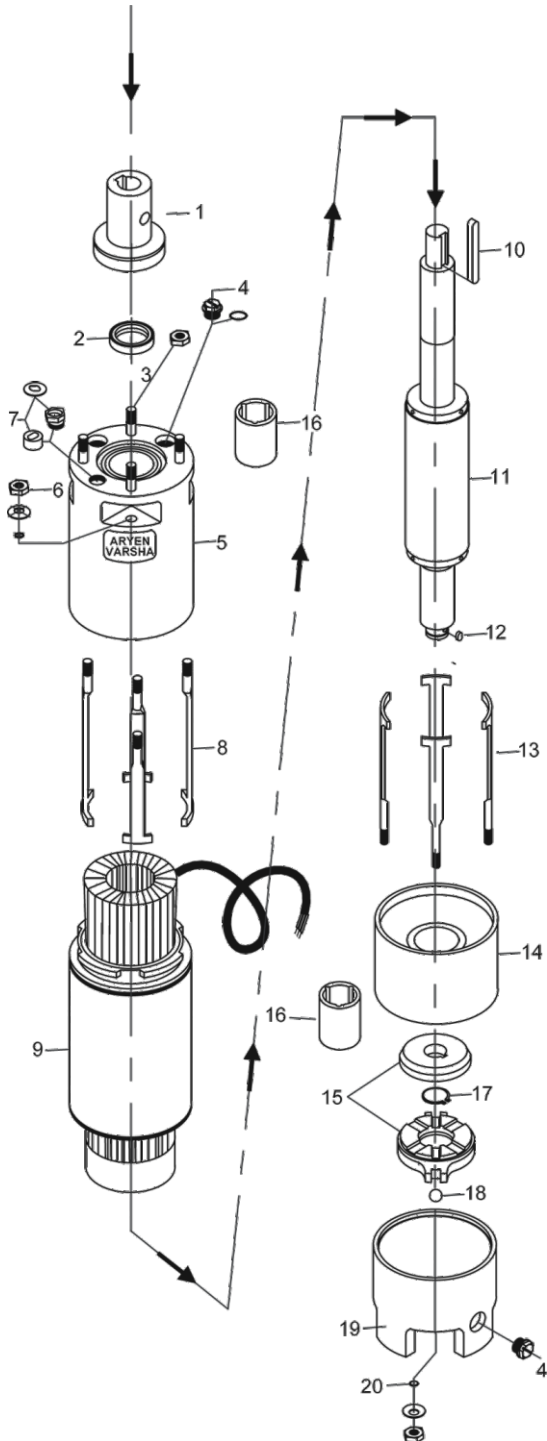


SPARE PARTS LIST

Sl.No.	Part Description	Qty
1	Coupling With Sand Guard.	1
2	Oil Seal.	1
3	Stud With Nut (M10).	4
4	Drain Plug Nut With 'O' Ring.	3
5	Seal Bracket.	1
6	Top Housing.	1
7	Plain Washer & 'O' Ring & Nut (M10).	4
8	Cromet Rubber & Cromet Lock Nut & Washer	1
9	Motor 'T' Bolt top (165mm).	4
10	Motor Body With Winding.	1
11	Coupling Key.	1
12	Rotor Shaft Assembly.	1
13	Thrust Bearing Key.	1
14	Motor 'T' Bolt Bottom (183 or 193 mm).	4
15	Bottom Housing.	1
16	Thrust Bearing Set.	1
17	Top & Bottom Housing LTB Bush.	2
18	Bearing Circlip.	1
19	Steel Ball.	1
20	Motor Leg.	1
21	Bend Washer & 'O' Ring & Nut (M10).	4

V6 MOTOR

EXPLODED VIEW

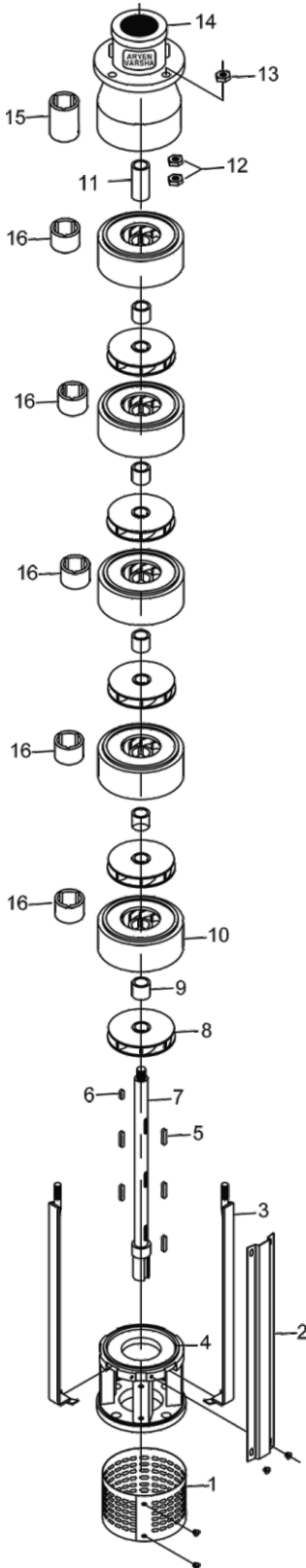


SPARE PARTS LIST

Sl.No.	Part Description	Qty
1	Coupling With Sand Guard.	1
2	Oil Seal.	1
3	Stud With Nut (M10).	4
4	Drain Plug Nut With 'O' Ring.	3
5	Top Housing.	1
6	Plain Washer & 'O' Ring & Nut (M10).	4
7	Cromet Rubber & Cromet Lock Nut & Washer	1
8	Motor 'T' Bolt top (165mm).	4
9	Motor Body With Winding.	1
10	Coupling Key.	1
11	Rotor Shaft Assembly.	1
12	Thrust Bearing Key.	1
13	Motor 'T' Bolt Bottom (183 or 193 mm).	4
14	Bottom Housing.	1
15	Thrust Bearing Set.	1
16	Top & Bottom Housing LTB Bush.	2
17	Bearing Circlip.	1
18	Steel Ball.	1
19	Motor Leg.	1
20	Bend Washer & 'O' Ring & Nut (M10).	4

V6 RADIAL FLOW PUMP

EXPLODED VIEW



SPARE PARTS LIST

Sl.No.	Part Description	Qty
1	Strainer With CSK Screw.	1
2	Cable Guard With CSK Screw.	1
3	Pump 'T' Bolt.	4
4	Inlet Bracket.	1
5	Stage Key.	Stages
6	D.O.L Key.	1
7	Pump Shaft.	1
8	Impeller.	Stages
9	Sleeve.	Stages
10	Diffuser Casing (40 / 45 / 50mm).	Stages
11	D.O.L Sleeve.	1
12	Shaft Lock Nut.	2
13	T Bolt Nut (M10).	4
14	Non Return Valve (2 or 2½" Delivery).	1
15	NRV GM Bush.	1
16	Casing LTB Bush / Rubber Bush.	Stages



SELECTION CHART FOR 150mm (6") SUBMERSIBLE PUMPSET

Performance Charts at 2900 rpm, 3Ø, 400Volts, 50Hz AC Supply
Max. Pumpset Diameter - 142 mm

RADIAL FLOW - AR SERIES

MATERIAL OF CONSTRUCTION IMPELLER : SS, DIFFUSER: CI

S. No.	Model	HP	Stages	Discharge							Shut Off	Delivery Size : 65 mm	
				LPH	39600	32400	28800	25200	21600	14400			10800
				LPM	660	540	480	420	360	240			180
				LPS	11	9	8	7	6	4			3
1	AR 5/4	5	4	HEAD IN METERS	18	29	33	37	42	46	50		57
2	AR 6/5	6	5		23	36	41	46	53	58	63		71
3	AR 7/6	7.5	6		28	43	49	55	64	70	76		85
4	AR 10/8	10	8		37	57	65	73	85	93	101		113
5	AR 12/10	12.5	10		46	71	81	91	106	116	126		141
6	AR 15/12	15	12		55	85	97	109	127	139	151		169
7	AR 15/13	15	13		60	92	105	118	138	151	164	183	
8	AR 17/14	17.5	14		65	99	113	127	149	163	177	197	
9	AR 20/16	20	16		74	113	129	145	170	186	202	225	
10	AR 25/20	25	20		93	141	161	181	213	233	253	281	

S. No.	Model	HP	Stages	Discharge							Shut Off	Delivery Size : 50 mm	
				LPH	32400	28800	25200	21600	18000	14400			10800
				LPM	540	480	420	360	300	240			180
				LPS	9	8	7	6	5	4			3
11	AR 3/3	3	3	HEAD IN METERS	13	19	25	31	33	35	37		43
12	AR 4/4	4	4		18	26	33	41	44	47	49		57
13	★ ARE 5/5	5	5		22	32	41	51	56	58	61		71
14	★ ARE 6/6	6	6		27	39	49	61	66	70	73		85
15	● AR 7/7	7.5	7		31	45	58	71	77	81	86		100
16	★ ARE 7/8	7.5	8		35	51	66	82	88	93	98		114
17	★ ARE 10/10	10	10		26	40	55	80	96	112	122	145	
18	AR 12/11	12.5	11		28	44	61	88	106	124	135	160	
19	● ARE 12/12	12.5	12		31	48	66	96	116	135	147	174	
20	AR 12/13	12.5	13		24	52	72	104	126	146	159	189	
21	● ARE 15/15	15	15	36	60	83	120	145	169	184	218		
22	AR 15/16	15	16	38	62	84	122	152	174	192	230		
23	AR 17/16	17.5	16	41	68	90	130	160	180	200	238		
24	AR 17/17	17.5	17	44	68	94	136	164	191	208	246		
25	AR 17/18	17.5	18	47	72	100	144	174	202	220	260		
26	AR 20/18	20	18	49	75	105	151	180	210	231	262		
27	AR 20/20	20	20	52	80	110	160	193	225	245	290		
28	AR 25/22	25	22	57	88	121	176	212	248	270	319		
29	AR 25/25	25	25	65	100	138	200	241	281	306	362		

★ Star Rated ● ISI Marking

Note : Due to continuous improvements, specifications, marking and designs are subject to change without prior notice.



SELECTION CHART FOR 150mm (6") SUBMERSIBLE PUMPSET

Performance Charts at 2900 rpm, 3Ø, 400Volts, 50Hz AC Supply

S. No.	Model	HP	Stages	Discharge								Shut Off	
				LPH	27000	25200	23400	19800	18000	14400	10800		
				LPM	450	420	390	330	300	240	180		
				LPS	7.5	7	6.5	5.5	5	4	3		
30	AR 3/4	3	4	HEAD IN METERS	12	15	20	29	32	40	44	56	Delivery Size : 50 mm
31	● AR 4/5	4	5		15	19	25	37	40	50	55	70	
32	●★ ARE 5/6	5	6		16	23	32	49	51	61	68	84	
33	● AR 6/7	6	7		26	30	38	56	61	73	80	98	
34	●★ ARE 6/8	6	8		30	34	43	64	70	83	92	112	
35	●★ ARE 7/10	7.5	10		38	42	54	80	88	104	115	140	
36	●★ ARE 10/12	10	12		45	51	65	96	105	125	138	160	
37	● ARE 12/14	12.5	14		45	53	70	102	112	140	154	196	
38	● ARE 12/15	12.5	15		55	68	82	115	127	153	169	210	
39	● AR 12/16	12.5	16		59	73	88	123	136	163	180	224	
40	● AR 15/18	15	18		56	64	100	140	155	184	207	252	
41	● AR 15/20	15	20		62	71	111	155	172	204	230	280	
42	AR 17/20	17.5	20		66	77	117	163	180	215	240	284	
43	AR 17/22	17.5	22		68	78	122	171	189	224	253	308	
44	AR 20/25	20	25		78	89	139	194	215	255	288	350	
45	AR 25/30	25	30		93	106	166	232	258	306	345	420	

S. No.	Model	HP	Stages	Discharge								Shut Off	
				LPH	19800	18000	16800	15000	12000	10200	8400		
				LPM	330	300	280	250	200	170	140		
				LPS	5.5	5	4.5	4.2	3.3	2.8	2.3		
46	●★ ARE 3/5	3	5	HEAD IN METERS	22	30	36	42	51	55	58	70	Delivery Size : 50 mm
47	● AR 4/6	4	6		26	36	43	51	61	66	70	84	
48	● AR 5/7	5	7		30	42	50	60	71	77	81	98	
49	●★ ARE 5/8	5	8		35	49	58	68	82	89	93	112	
50	● AR 6/10	6	10		43	60	72	85	102	110	116	140	
51	●★ ARE 7/12	7.5	12		52	72	86	102	122	132	139	168	
52	● ARE 10/15	10	15		65	90	108	127	153	165	174	210	
53	●★ ARE 10/16	10	16		23	75	100	123	155	168	179	210	
54	● ARE 12/18	12.5	18		26	84	113	138	174	189	201	234	
55	●★ ARE 12/20	12.5	20		28	94	125	154	194	210	236	260	
56	●★ ARE 15/24	15	24		70	110	150	179	224	244	260	314	
57	●★ ARE 15/25	15	25		73	115	156	186	233	250	270	325	

★ Star Rated ● ISI Marking

Note : Due to continuous improvements, specifications, marking and designs are subject to change without prior notice.



SELECTION CHART FOR 150mm (6") SUBMERSIBLE PUMPSET

Performance Charts at 2900 rpm, 3Ø, 400Volts, 50Hz AC Supply

S. No.	Model	HP	Stages	Discharge							Shut Off	Delivery Size : 50 mm	
				LPH	19800	18000	16800	15000	12000	10200			8400
				LPM	330	300	280	250	200	170			140
LPS	5.5	5	4.5	4.2	3.3	2.8	2.3						
58	AR 17/25	17.5	25	HEAD IN METERS	119	160	190	217	237	254	274		329
59	● ARE 17/28	17.5	28		128	175	209	238	260	280	302		364
60	●★ ARE 17/30	17.5	30		137	188	224	255	279	300	324		390
61	● ARE 20/30	20	30		139	190	227	258	282	303	327		394
62	●★ ARE 20/32	20	32		147	200	238	272	298	320	346		416
63	AR 20/35	20	35		160	219	261	298	326	350	378		455
64	AR 25/40	25	40		182	250	298	340	372	400	432	520	

S. No.	Model	HP	Stages	Discharge						Shut Off	Delivery Size : 50 mm	
				LPH	16200	14400	13200	12000	10200			7200
				LPM	270	240	220	200	170			120
LPS	4.5	4	3.6	3.3	2.8	2						
65	● AR 3/6	3	6	HEAD IN METERS	33	40	45	50	53	57		70
66	● AR 4/8	4	8		44	54	60	67	71	76		94
67	●★ ARE 5/10	5	10		54	65	74	82	88	95		113
68	● AR 6/12	6	12		67	78	90	98	106	112		136
69	● ARE 7/14	7.5	14		77	90	104	117	126	135		165
70	●★ ARE 7/15	7.5	15		82	96	111	125	135	144		175
71	● ARE 7/16	7.5	16		88	103	119	134	145	154	188	
72	● ARE 10/18	10	18		92	111	131	146	158	167	203	
73	●★ ARE 10/20	10	20		102	130	145	162	175	185	225	
74	● AR 12/22	12.5	22		99	124	154	173	191	206	245	
75	● AR 12/24	12.5	24		108	132	168	188	208	224	270	
76	●★ ARE 12/25	12.5	25		120	138	175	196	217	234	280	
77	●★ ARE 12/27	12.5	27		130	150	190	212	235	253	303	
78	● ARE 15/28	15	28		135	156	197	220	244	263	314	
79	●★ ARE 15/30	15	30		140	165	210	235	260	280	335	
80	● ARE 17/32	17.5	32		149	176	224	251	277	299	357	
81	● ARE 17/33	17.5	33		154	182	231	259	286	308	369	
82	●★ ARE 17/35	17.5	35		170	196	250	280	300	323	390	
83	● ARE 20/38	20	38		185	213	271	304	325	350	423	
84	●★ ARE 20/40	20	40		195	225	285	320	345	370	445	

★ Star Rated ● ISI Marking

Note : Due to continuous improvements, specifications, marking and designs are subject to change without prior notice.



SELECTION CHART FOR 150mm (6") SUBMERSIBLE PUMPSET

Performance Charts at 2900 rpm, 3Ø, 400Volts, 50Hz AC Supply

S. No.	Model	HP	Stages	Discharge						Shut Off	
				LPH	16800	13200	10800	9600	8400		54000
				LPM	280	220	180	160	140		9080
LPS	4.6	3.6	3	2.6	2.3	1.5.6					
85	● AR 3/8	3	8	HEAD IN METERS	27	48	56	62	67	74	87
86	● AR 4/10	4	10		34	60	70	78	84	93	110
87	●★ ARE 5/12	5	12		40	72	84	92	100	110	130
88	● AR 6/15	6	15		50	90	105	114	125	138	165
89	● AR 7/18	7.5	18		60	108	126	139	149	162	199
90	●★ ARE 7/20	7.5	20		66	120	140	154	165	180	216
91	● AR 10/22	10	22		75	125	150	163	173	206	242
92	● AR 10/24	10	24		81	140	168	182	195	213	265
93	●★ ARE 10/25	10	25		85	147	175	190	205	222	275
94	AR 12/28	12.5	28		95	165	196	213	230	245	308
95	●★ ARE 12/30	12.5	30		100	180	210	232	250	270	330
96	● ARE 15/33	15	33		110	198	231	255	275	297	363
97	● ARE 15/35	15	35		116	210	245	266	291	321	384
98	●★ ARE 15/37	15	37		123	222	259	281	308	340	406
99	AR 15/40	15	40		133	240	280	302	330	365	435
100	AR 17/40	17.5	40		134	242	281	306	334	367	437

Delivery Size : 50 mm

S. No.	Model	HP	Stages	Discharge						Shut Off	
				LPH	12000	9600	8400	7200	6000		4800
				LPM	200	160	140	120	100		80
LPS	3.3	2.6	2.3	2	1.6	1.3					
101	AR 3/9	3	9	HEAD IN METERS	41	54	67	72	81	86	96
102	● AR 3/10	3	10		46	60	74	80	90	96	107
103	●★ ARE 5/15	5	15		69	90	111	120	135	144	161
104	AR 5/17	5	17		78	102	126	136	153	163	182
105	AR 6/18	6	18		83	108	133	144	162	173	193
106	●★ ARE 6/20	6	20		92	120	148	160	180	192	214
107	● ARE 7/21	7.5	21		97	126	155	168	189	202	226
108	●★ ARE 7/22	7.5	22		101	132	163	176	198	211	237
109	● ARE 7/23	7.5	23		106	138	170	184	207	221	247
110	● ARE 7/24	7.5	24		110	144	178	192	216	230	258
111	●★ ARE 7/25	7.5	25		115	150	185	200	225	240	269
112	●★ ARE 10/30	10	30		160	200	235	260	280	300	334
113	AR 12/35	12.5	35		187	233	274	303	326	350	389
114	AR 12/40	12.5	40		213	266	313	347	373	400	445

Delivery Size : 50 mm

★ Star Rated ● ISI Marking

Note : Due to continuous improvements, specifications, marking and designs are subject to change without prior notice.

150mm V6 Submersible Pumpsets Mixed Flow AM & AMS Series

Range : 3 HP to 25 HP



Salient Features:

Better Efficiency with consistent Performance

All motors are designed to start and run at low voltages

Robust Construction ensuring high durability

Rotors are treated with corrosion resistant epoxy paints

Superior Polymer Coated wire to withstand voltage fluctuations

All rotating components are dynamically balanced for smooth operation and long bearing life

Heavy duty Specially designed Carbon Thrust Bearing

Bearing Sleeves are precision machined for long life

Top and suction bushes are well protected from sand entry

LTB-4, Leaded Bronze bush with optimum wear resistance

Material of Construction:

Part Name (Motor)	Material
Motor Body	Stainless Steel
Motor Shaft	SS AISI 410 / 420
Bush Bearing	LTB - Bronze
Thrust Bearing	AISI - Carbon
Bearing Housing	CI FG 200 / 250

Part Name (Pump)	Material
Pump Shaft	SS AISI 410
Suction Housing	CI FG 200
NRV	CI FG 200
Impeller	SS 410
Bowl	CI FG 200/ SS 410

Applications:

Irrigation to Agricultural Farms

Solar Pumping Station

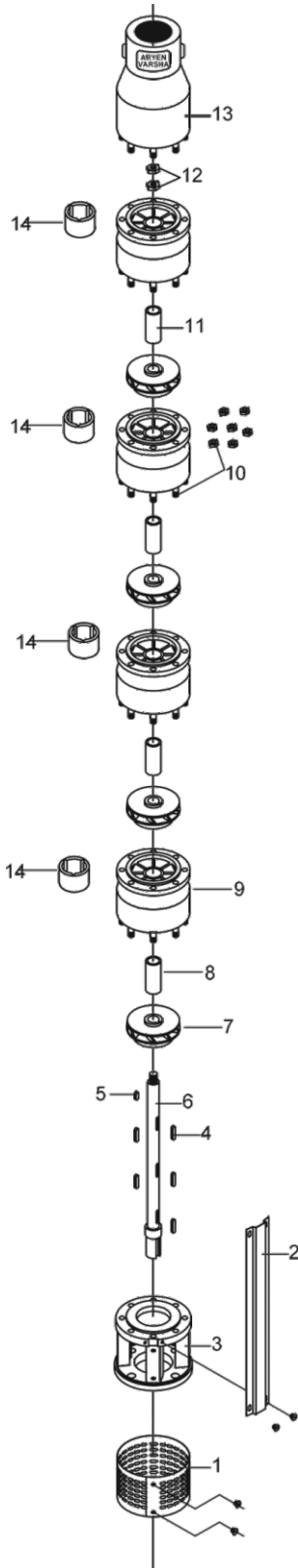
Drip and Sprinkler Irrigation

Industrial Water Supply

Hotels, Dairies, Cattle and Poultry Farms

V6 MIXED FLOW PUMP

EXPLODED VIEW



SPARE PARTS LIST

Sl.No.	Part Description	Qty
1	Strainer With CSK Screw.	1
2	Cable Guard With CSK Screw.	1
3	Inlet Bracket.	1
4	Stage Key.	Stages
5	D.O.L Key.	1
6	Pump Shaft.	1
7	Impeller.	Stages
8	Sleeve.	Stages
9	Bowl (CI / SS)	Stages
10	Stud With Nut (M8 & M6).	8 - 12
11	D.O.L Sleeve.	1
12	Lock Nut.	2
13	Non Return Valve (2½" or 3" Delivery).	1
14	Bowl Rubber Bush / GM Bush.	Stages



SELECTION CHART FOR 150mm (6") SUBMERSIBLE PUMPSET

Performance Charts at 2900 rpm, 3Ø, 400Volts, 50Hz AC Supply
Max. Pumpset Diameter - 145 mm

MIXED FLOW - AM SERIES

MATERIAL OF CONSTRUCTION IMPELLER : SS, BOWL : CI / SS

S. No.	Model	HP	Stages	Discharge					Shut Off	Delivery Size : 65 mm	
				LPH	39600	32400	28800	25200			21600
				LPM	660	540	480	420			360
				LPS	11	9	8	7			6
1	● AM 3/3	3	3	HEAD IN METERS	12	19	21	23	25		33
2	●★ AME 5/5	5	5		20	31	34	38	41		55
3	●★ AME 6/6	6	6		24	37	41	46	50		65
4	● AM 7/7	7.5	7		28	44	48	54	58		76
5	● AM 7/8	7.5	8		32	49	54	61	65		87
6	● AM 10/9	10	9		36	56	62	68	74		98
7	● AM 10/10	10	10		40	62	68	76	83	110	
8	AM 12/12	12.5	12		48	75	82	92	98	130	
9	AM 15/15	15	15		60	93	102	114	123	163	
10	AM 17/17	17.5	17		68	105	116	130	140	185	

S. No.	Model	HP	Stages	Discharge						Shut Off	Delivery Size : 65 mm	
				LPH	46800	39600	32400	28800	25200			21600
				LPM	780	660	540	480	420			360
				LPS	13	11	9	8	7			6
11	●★ AME 5/4	5	4	HEAD IN METERS	14	25	31	35	37	39		44
12	●★ AME 6/5	6	5		16	28	36	42	46	48		55
13	●★ AME 7/6	7.5	6		20	35	45	50	54	56		66
14	● AM 10/8	10	8		26	46	60	66	73	75		90
15	● AM 12/10	12.5	10		33	59	76	84	91	94		110
16	● AM 15/12	15	12		40	70	90	101	108	113		132
17	AM 17/14	17.5	14		46	81	106	116	126	132	155	
18	AM 20/16	20	16		53	94	120	133	145	151	176	

Note : AM - Cast Iron Bowl with Stainless Steel Impeller

AMS - Stainless Steel Bowl with Stainless Steel Impeller

★ Star Rated ● ISI Marking ● AMS Models

Note : Due to continuous improvements, specifications, marking and designs are subject to change without prior notice.



SELECTION CHART FOR 150mm (6") SUBMERSIBLE PUMPSET

Performance Charts at 2900 rpm, 3Ø, 400Volts, 50Hz AC Supply

S. No.	Model	HP	Stages	Discharge						Shut Off		
				LPH	46800	39600	32400	28800	25200		21600	
				LPM	780	660	540	480	420		360	
				LPS	13	11	9	8	7	6		
19	● AME 5/4 SD	5	4	HEAD IN METERS	14	25	31	35	37	39	44	Delivery Size : 65 mm
20	● AME 5/5 SD	5	5		20	31	34	38	41	55		
21	● AME 6/5 SD	6	5		16	28	36	42	46	48	55	
22	● AME 6/6 SD	6	6		24	37	41	46	50	65		
23	● AME 7/6 SD	7.5	6		20	35	45	50	54	56	66	
24	● AM 7/7 SD	7.5	7		28	44	48	54	58	76		
25	● AM 7/8 SD	7.5	8		32	49	54	61	65	87		
26	● AM 10/8 SD	10	8		26	46	60	66	73	75	90	
27	● AM 10/9 SD	10	9		36	56	62	68	74	98		
28	● AM 10/10 SD	10	10		40	62	68	76	83	110		

S. No.	Model	HP	Stages	Discharge						Shut Off		
				LPH	60000	50400	39600	28800	21600		18000	
				LPM	1000	840	660	480	360		300	
				LPS	16.6	14	11	8	6	5		
29	● AM 3/2	3	2	HEAD IN METERS	10	12	14	16	18	20	23	Delivery Size : 75 mm
30	● AM 5/3	5	3		16	19	25	26	28	30	33	
31	● AM 6/4	6	4		20	23	27	32	36	38	44	
32	● AM 7/5	7.5	5		25	30	35	40	44	47	55	
33	● AM 10/6	10	6		32	38	50	52	56	60	66	
34	● AM 12/8	12.5	8		40	48	56	64	72	76	88	
35	● AM 15/9	15	9		45	54	63	72	80	85	100	
36	● AM 15/10	15	10		50	60	70	80	88	95	110	
37	AM 20/12	20	12		60	72	85	96	108	115	133	

S. No.	Model	HP	Stages	Discharge						Shut Off		
				LPH	72000	60000	48000	37200	27000		21600	
				LPM	1200	1000	800	620	450		360	
				LPS	20	16.6	13.3	10.3	7.5	6		
38	AM 5/2	5	2	HEAD IN METERS	6	11	15	18	20	22	25	Delivery Size : 75 mm
39	AM 6/3	6	3		8	17	23	27	31	34	36	
40	AM 7/4	7.5	4		11	22	30	35	40	44	48	
41	AM 10/5	10	5		14	28	38	44	50	55	60	
42	AM 12/6	12.5	6		17	33	45	53	60	66	72	
43	AM 15/7	15	7		20	42	54	62	72	79	86	
44	AM 15/8	15	8		22	44	60	70	80	88	95	
45	AM 20/10	20	10		28	56	77	89	100	110	120	
46	AM 25/12	25	12		33	67	92	106	120	132	144	

★ Star Rated ● ISI Marking ● AMS Models - Stainless Steel Bowl with Stainless Steel Impeller - Availabel on special order basis
SD - Stud Type Bowls

Note : Due to continuous improvements, specifications, marking and designs are subject to change without prior notice.

150mm V6 Submersible Pumpsets High Head AR 50 Series

Range : 3 HP to 25 HP



Salient Features:

- Pumpsets are designed to dismantle and assemble easily
- Better Efficiency with consistent Performance
- All motors are designed to start and run at low voltages
- Superior Polymer Coated wire to withstand voltage fluctuations
- Rotors are treated with corrosion resistant epoxy paints
- All rotating components are dynamically balanced for smooth operation and long bearing life
- Heavy duty Specially designed Carbon Thrust Bearing
- LTB-4, Leaded Bronze bush with optimum wear resistance
- Bearing Sleeves are precision machined for long life
- Top and suction bushes are well protected from sand entry

Material of Construction:

Part Name (Motor)	Material
Motor Body	Stainless Steel
Motor Shaft	SS AISI 410 / 420
Bush Bearing	LTB - Bronze
Thrust Bearing	AISI - Carbon
Bearing Housing	CI FG 200 / 250

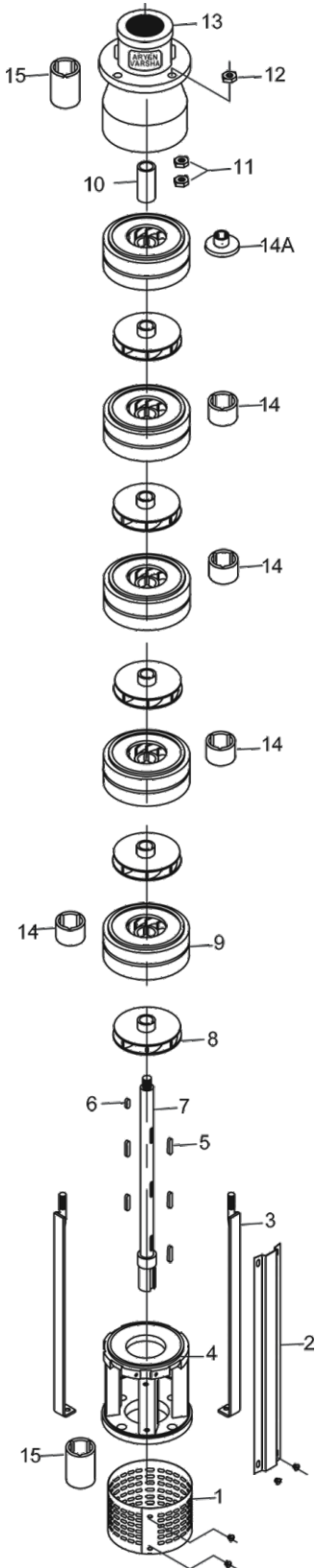
Part Name (Pump)	Material
Pump Shaft	SS AISI 410
Suction Housing	CI FG 200
NRV	CI FG 200
Impeller	SS 410
Casing	SS 302

Applications:

- Irrigation to Agricultural Farms
- Solar Pumping Station
- Drip and Sprinkler Irrigation
- Industrial Water Supply

V6 HIGH HEAD AR-50 PUMP

EXPLODED VIEW



SPARE PARTS LIST

Sl.No.	Part Description	Qty
1	Strainer With CSK Screw.	1
2	Cable Guard With CSK Screw.	1
3	Pump Bolt.	4
4	Inlet Bracket.	1
5	Stage Key.	Stages
6	D.O.L Key.	1
7	Pump Shaft.	1
8	Impeller.	Stages
9	Diffuser Casing.	Stages
10	D.O.L Sleeve.	1
11	Lock Nut.	2
12	M10 Nut.	4
13	Non Return Valve (2 or 2½" Delivery).	1
14	Casing GM Bush.	Stages
14A	Top Diffuser With Thrust Arrest Pad.	1
15	NRV & I.B GM Bush.	2



SELECTION CHART FOR 150mm (6") SUBMERSIBLE PUMPSET

Performance Charts at 2900 rpm, 3Ø, 400Volts, 50Hz AC Supply
Max. Pumpset Diameter - 142 mm

RADIAL FLOW - AR 50 SERIES

MATERIAL OF CONSTRUCTION IMPELLER : SS, DIFFUSER : SS

S. No.	Model	HP	Stages	Discharge						Shut Off	Delivery Size : 50 mm	
				LPH	24000	21600	18000	16200	15000			13200
				LPM	400	360	300	270	250			220
LPS	6.6	6	5	4.5	4.1	3.6						
1	AR 50 - 5/5	5	5	HEAD IN METERS	30	40	50	55	60	65		75
2	AR 50 - 6/6	6	6		36	48	60	66	72	78		90
3	● AR 50 - 7/8	7.5	8		48	64	80	88	96	104		120
4	AR 50 - 7.8/8	7.8	8		52	68	84	92	100	108		120
5	● ★ ARE 50 - 10/10	10	10		60	80	100	110	120	130		150
6	● ARE 50 - 12/11	12.5	11		66	89	110	121	132	144		165
7	● ARE 50 - 12/12	12.5	12		72	95	120	132	144	156		180
8	AR 50 - 15/15	15	15		90	121	150	165	180	195		225
9	AR 50 - 17/16	17.5	16		96	129	160	176	192	208	240	
10	AR 50 - 17/17	17.5	17		102	137	170	187	205	221	255	
11	AR 50 - 20/20	20	20		121	160	200	220	240	260	300	
12	AR 50 - 25/25	25	25		175	200	275	290	300	330	375	

S. No.	Model	HP	Stages	Discharge						Shut Off	Delivery Size : 50 mm	
				LPH	18000	15600	13800	12000	9600			8400
				LPM	300	260	230	200	160			140
LPS	5	4.3	3.8	3.3	2.6	2.3						
13	AR 50 - 5/6	5	6	HEAD IN METERS	35	50	60	66	75	80		90
14	AR 50 - 6/8	6	8		48	67	80	88	100	107		120
15	● AR 50 - 7/10	7.5	10		60	84	100	110	125	133		150
16	AR 50 - 7.8/10	7.8	10		64	88	104	114	129	137		150
17	AR 50 - 10/12	10	12		72	100	120	132	150	160		180
18	AR 50 - 12/15	12.5	15		90	125	150	165	188	200		225
19	AR 50 - 12/16	12.5	16		96	134	160	176	200	213		240
20	AR 50 - 15/18	15	18		108	150	180	200	225	240		270
21	AR 50 - 17/20	17.5	20		120	167	200	220	250	267	300	
22	AR 50 - 20/24	20	24		144	200	240	264	300	312	360	
23	AR 50 - 20/25	20	25		150	208	250	275	313	325	375	

★ Star Rated ● ISI Marking

Note : Due to continuous improvements, specifications, marking and designs are subject to change without prior notice.



SELECTION CHART FOR 150mm (6") SUBMERSIBLE PUMPSET

Performance Charts at 2900 rpm, 3Ø, 400Volts, 50Hz AC Supply

S. No.	Model	HP	Stages	Discharge						Shut Off	Delivery Size : 50 mm	
				LPH	14400	12600	11400	9600	7800			6600
				LPM	240	210	190	160	130			110
LPS	4	3.5	3.1	2.6	2.1	1.8						
24	AR 50 - 5/8	5	8	HEAD IN METERS	47	60	75	87	100	106		120
25	AR 50 - 6/10	6	10		58	75	92	110	125	135		150
26	● AR 50 - 7/12	7.5	12		70	90	110	130	150	160		180
27	AR 50 - 10/15	10	15		88	114	138	162	188	200		225
28	AR 50 - 10/16	10	16		93	120	147	173	200	213		240
29	AR 50 - 12/20	12.5	20		116	150	185	216	250	266		300
30	AR 50 - 15/25	15	25		145	188	231	270	313	333	375	

S. No.	Model	HP	Stages	Discharge						Shut Off	Delivery Size : 50 mm	
				LPH	12600	10800	9000	7200	5400			3600
				LPM	210	180	150	120	90			60
LPS	3.5	3	2.5	2	1.5	1						
31	AR 50 - 5/10	5	10	HEAD IN METERS	43	67	97	119	128	139		150
32	AR 50 - 6/12	6	12		52	80	116	142	154	166		180
33	AR 50 - 7/15	7.5	15		65	100	145	178	193	207	225	
34	AR 50 - 7.8/15	7.8	15		69	104	149	182	197	211	225	
35	AR 50 - 10/20	10	20		88	134	194	236	257	276	300	

S. No.	Model	HP	Stages	Discharge						Shut Off	Delivery Size : 65 mm	
				LPH	30000	27000	23400	21000	17400			13200
				LPM	500	450	390	350	290			220
LPS	8.3	7.5	6.5	5.8	4.8	3.6						
36	AR 50 - 5/4	5	4	HEAD IN METERS	25	35	40	45	50	55		60
37	AR 50 - 6/5	6	5		32	44	50	57	63	69		75
38	AR 50 - 7/6	7.5	6		38	53	60	68	75	83		90
39	AR 50 - 10/8	10	8		50	70	80	90	100	110		120
40	AR 50 - 12/10	12.5	10		63	88	100	113	125	138		150
41	AR 50 - 15/12	15	12		75	105	120	135	150	165		180
42	AR 50 - 17/14	17.5	14		88	123	140	158	175	193	210	
43	AR 50 - 20/15	20	15		94	132	150	169	188	207	225	
44	AR 50 - 20/16	20	16		100	141	160	180	201	221	240	
45	AR 50 - 25/20	25	20		125	176	200	225	251	276	300	

★ Star Rated ● ISI Marking

Note : Due to continuous improvements, specifications, marking and designs are subject to change without prior notice.



SELECTION CHART FOR 150mm (6") SUBMERSIBLE PUMPSET

Performance Charts at 2900 rpm, 3Ø, 400Volts, 50Hz AC Supply

S. No.	Model	HP	Stages	Discharge						Shut Off	Delivery Size : 65 mm	
				LPH	36000	32400	30000	27600	24600			21000
				LPM	600	540	500	460	410			350
				10	9	8.3	7.6	6.8	5.8			
46	AR 50 - 5/3	5	3	HEAD IN METERS	18	22	26	30	33	37		45
47	AR 50 - 6/4	6	4		24	30	35	40	45	50		60
48	AR 50 - 7/5	7.5	5		30	37	44	50	56	63		75
49	AR 50 - 10/6	10	6		36	45	53	60	68	75		90
50	AR 50 - 12/8	12.5	8		48	60	70	80	90	100		120
51	AR 50 - 15/10	15	10		60	75	88	100	113	125		150
52	AR 50 - 20/12	20	12		72	90	105	120	135	150	180	
53	AR 50 - 25/16	25	16		96	120	140	160	179	200	240	

S. No.	Model	HP	Stages	Discharge						Shut Off	Delivery Size : 65 mm	
				LPH	49200	44400	40800	37200	31200			27000
				LPM	820	740	680	620	520			450
				LPS	13.6	12.3	11.3	10.3	8.6	7.5		
54	AR 50 - 6/3	6	3	HEAD IN METERS	15	23	26	30	34	38		45
55	AR 50 - 7/4	7.5	4		20	30	35	40	45	50		60
56	AR 50 - 10/5	10	5		25	38	44	50	56	63		75
57	AR 50 - 12/6	12.5	6		30	45	53	60	68	75		90
58	AR 50 - 15/7	15	7		35	53	61	70	79	88		105
59	AR 50 - 15/8	15	8		40	60	70	80	90	100		120
60	AR 50 - 20/10	20	10		50	75	88	100	113	125	150	
61	AR 50 - 25/12	25	12		60	90	106	120	136	150	180	

Note : Due to continuous improvements, specifications, marking and designs are subject to change without prior notice.

V5 (125 mm) Motors Coupled with V4 (100 mm) Pumps

Range : 5 HP to 10 HP

Salient Features:

- Robust Construction ensuring high durability
- Better Efficiency with consistent Performance
- All motors are designed to start and run at low voltages
- Pumpsets are designed to dismantle and assemble easily
- Rotors are treated with corrosion resistant epoxy paints
- All rotating components are dynamically balanced for smooth operation and long bearing life
- Heavy duty Specially designed Carbon Thrust Bearing
- Bearing Sleeves are precision machined for long life

Material of Construction:

Part Name (Motor)	Material
Motor Body	Stainless Steel
Motor Shaft	SS AISI 410 / 420
Bush Bearing	LTB - Bronze
Thrust Bearing	AISI - Carbon
Bearing Housing	CI FG 200 / 250

Part Name (Pump)	Material
Pump Shaft	SS AISI 410
Suction Housing	CI FG 200 / SS
NRV	CI FG 200 / SS
Impeller	Noryl – GFN3
Diffuser	Noryl – GFN3
Casing	Stainless Steel

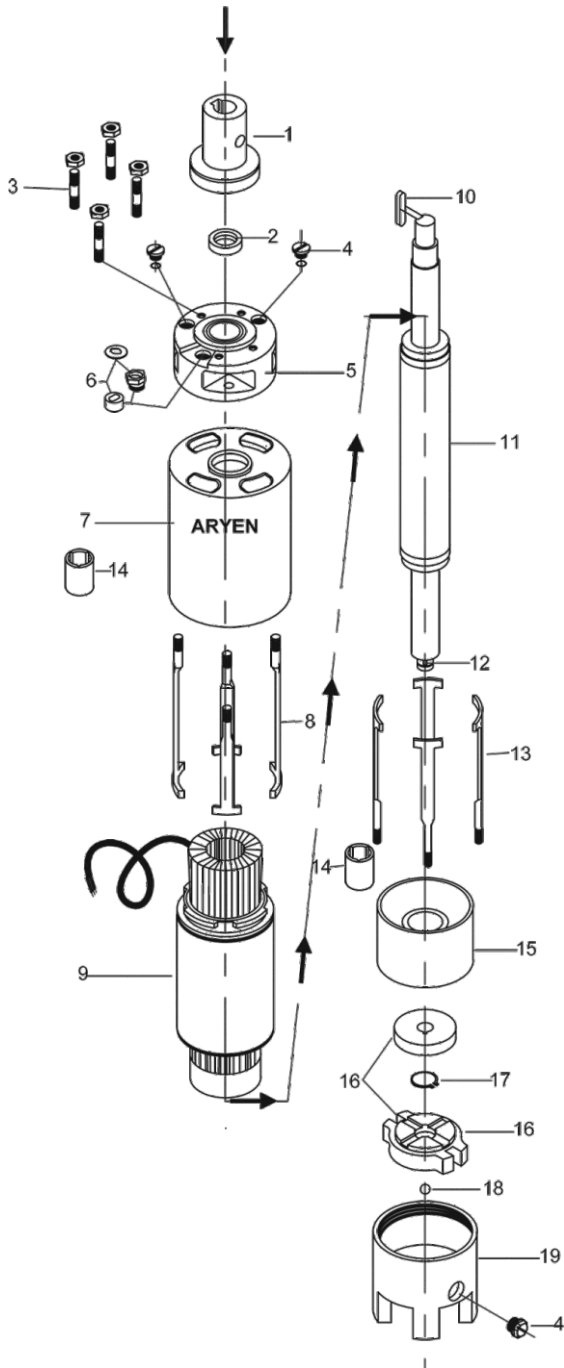
Applications:

- Domestic Water Supply
- Solar Pumping Station
- Lawns and Gardens
- Housing Complex, Apartments



V5 MOTOR

EXPLODED VIEW

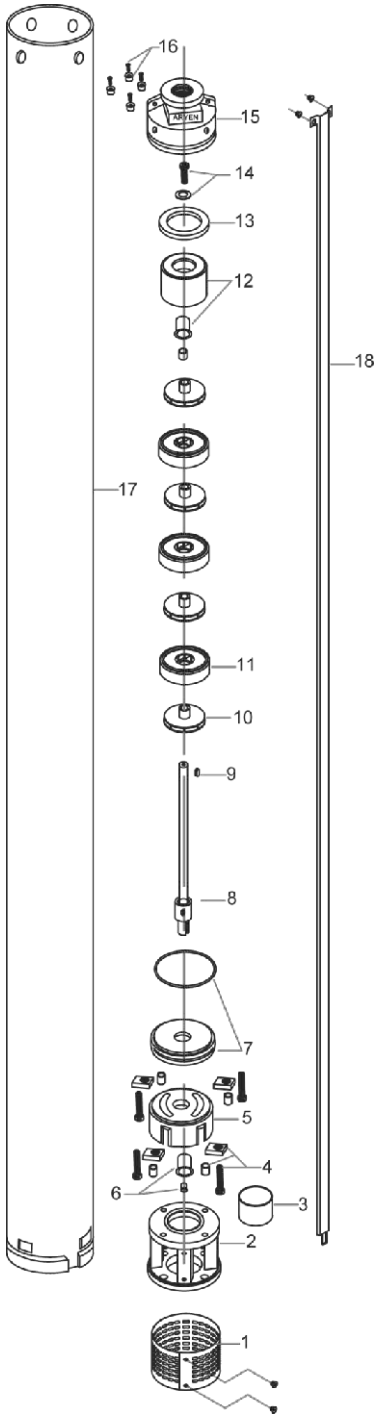


SPARE PARTS LIST

Sl.No.	Part Description	Qty
1	Coupling With Sand Guard	1
2	Oil Seal	1
3	Top Stud With Nut (M8)	4
4	Drain Plug Nut With 'O' Ring	3
5	Seal Bracket	1
6	Cromet Rubber & Cromet Lock Nut & Washer	1
7	Top Housing	1
8	Motor "T" Bolt Top (146 mm)	4
9	Motor Body With Winding	1
10	Coupling Key	1
11	Rotor Shaft Assembly	1
12	Thrust Bearing Key	1
13	Motor "T" Bolt Bottom (209 mm)	4
14	Top & Bottom Housing LTB Bush	4
15	Bottom Housing	1
16	Thrust Bearing Set	1
17	Bearing Circlip	1
18	Steel Ball	1
19	Motor Leg	1

V4 HDJ PUMP

EXPLODED VIEW



SPARE PARTS LIST

Sl.No.	Part Description	Qty
1	Strainer With CSK Screw.	1
2	Inlet Bracket.	1
3	Nut Holder Ring.	1
4	Allen Head Bolt (M8) With Lock Nut & Lock Bush.	4
5	Nut Holder.	1
6	Nut Holder GM Bush & Sleeve.	1
7	Seal Ring With 'O' Ring.	1
8	Pump Shaft.	1
9	D.O.L Key.	Stages
10	Impeller.	Stages
11	Diffuser Casing.	Stages
12	Top D.O.L With Rubber Bush.	1
13	NRV Rubber Washer.	1
14	Shaft Top Bolt (M6) & Plain Washer.	1
15	Non Return Valve (1 ¼ or 1 ½ or 2).	1
16	NRV Button With CSK Screw.	4
17	Pump Jacket.	1
18	Cable Guard With CSK Screw.	1



SELECTION CHART FOR 125mm (5") & ABOVE DIA. BOREWELLS

Performance Charts at 2900 rpm, 3Ø, 400Volts, 50Hz AC Supply
Max. Pumpset Diameter - 125 mm

HDJ - HIGH DEPTH JACKET MODELS

MATERIAL OF CONSTRUCTION - IMPELLER & DIFFUSER : NORYL

S. No.	Model	HP	Stages	Discharge										Shut Off
				LPH	5400	4320	3600	3060	2520	2160	1800	1620	1080	
				LPM	90	72	60	51	42	36	30	27	18	
1	HDJ 4040	4	40	HEAD IN METERS	90	120	152	184	200	216	240	256	268	292
2	●★ HDJ-E 5050	5	50		110	150	190	230	250	270	300	320	335	365
3	●★ HDJ-E 6060	6	60		135	190	250	300	330	350	370	390	410	432

Delivery Size : 32 mm

S. No.	Model	HP	Stages	Discharge										Shut Off
				LPH	3600	3060	2520	2160	1800	1620	1440	1080	720	
				LPM	60	51	42	36	30	27	24	18	12	
4	1Ø, 3Ø HDJ 3035	3	35	HEAD IN METERS	76	89	105	121	142	171	193	210	228	239
5	● 1Ø, 3Ø HDJ-E 3040	3	40		82	100	140	160	180	210	220	240	260	292
6	HDJ 4050	4	50		108	146	154	233	258	275	283	308	325	366
7	●★ HDJ-E 5060	5	60		130	175	185	280	310	330	340	370	390	439

Delivery Size : 32 mm

HH - HIGH HEAD MODELS

S. No.	Model	Motor	HP	Stages	Discharge									Shut Off	
					LPH	7200	6480	5760	5400	5040	4680	4320	3600		2880
					LPM	120	108	96	90	84	78	72	60		48
8	HH 4020	V4	4	20	HEAD IN METERS	56	80	90	96	104	110	114	120	132	150
9	HH 5025	V4 / V5	5	25		70	100	112	120	130	137	142	150	165	187
10	HH 6030	V4 / V5	6	30		100	120	140	150	158	167	178	185	198	225
11	HH 7540	V5	7.5	40		120	160	182	200	210	220	230	240	270	295
12	HH 1045	V5	10	45		122	160	195	205	225	235	248	270	293	333

Delivery Size : 32 mm

S. No.	Model	Motor	HP	Stages	Discharge									Shut Off	
					LPH	6480	5760	5040	4320	3600	3240	2880	2520		2160
					LPM	108	96	84	72	60	54	48	42		36
13	HH 4028	V4	4	28	HEAD IN METERS			98	125	160	174	183	191	194	220
14	HH 5035	V4 / V5	5	35		83	100	122	155	200	218	229	239	243	280
15	HH 6042	V5	6	42		100	120	155	190	250	262	275	288	295	336
16	HH 7554	V5	7.5	54		130	154	200	250	300	325	354	370	380	430

Delivery Size : 40 mm

★ Star Rated ● ISI Marking

Note : Due to continuous improvements, specifications, marking and designs are subject to change without prior notice.



SELECTION CHART FOR 125mm (5") & ABOVE DIA. BOREWELLS

Performance Charts at 2900 rpm, 3Ø, 400Volts, 50Hz AC Supply

HDC - HIGH DEPTH STAINLESS STEEL CUP MODELS

MATERIAL OF CONSTRUCTION - IMPELLER & DIFFUSER : NORYL

S. No.	Model	HP	Stages	Discharge										Shut Off
				LPH	3600	3240	3060	2520	2160	1800	1620	1440	1080	
				LPM	60	54	51	42	36	30	27	24	18	
17	HDC 3040	3	40	HEAD IN METERS	80	87	96	138	162	195	200	215	235	273
18	★ HDC-E 5050	5	50		140	180	210	265	270	282	290	305	315	350

Delivery Size : 32 mm

HD - HIGH DISCHARGE MODELS

S. No.	Model	Motor	HP	Stages	Discharge										Shut Off
					LPH	9900	9000	8280	7920	7200	6300	5400	4500	3600	
					LPM	165	150	138	132	120	105	90	75	60	
19	HD 4020	V4	4	20	HEAD IN METERS	48	64	76	80	88	100	108	112	116	130
20	HD 5025	V4 / V5	5	25		60	80	95	100	110	125	135	140	145	164
21	HD 6030	V4 / V5	6	30		65	75	100	120	130	150	160	170	180	200
22	HD 7540	V5	7.5	40		80	100	120	135	155	180	195	210	230	257
23	HD 1050	V5	10	50		100	135	160	180	200	230	250	260	275	320

Delivery Size : 50 mm

S. No.	Model	Motor	HP	Stages	Discharge										Shut Off
					LPH	9900	9000	8280	7920	7200	6300	5400	4500	3600	
					LPM	165	150	138	132	120	105	90	75	60	
24	HD 4028	V4	4	28	HEAD IN METERS	72	88	112	120	128	136	144	148	150	168
25	HD 5035	V4 / V5	5	35		90	110	140	150	160	170	180	185	192	210
26	HD 6042	V4 / V5	6	42		130	160	180	200	210	220	230	235	240	255
27	HD 7550	V5	7.5	50		120	165	196	205	220	240	250	260	270	295

Delivery Size : 40 mm

HDM - HIGH DISCHARGE MIXED FLOW MODELS

S. No.	Model	Motor	HP	Stages	Discharge										Shut Off
					LPH	21600	18000	14400	12600	10800	9000	7200	5400	3600	
					LPM	360	300	240	210	180	150	120	90	60	
28	HDM 5014	V4 / V5	5	14	HEAD IN METERS	19	28	35	38	43	46	51	55	60	66
29	HDM 6018	V5	6	18		24	36	45	49	55	59	66	71	77	83

Delivery Size : 50 mm

★ Star Rated ● ISI Marking

Note : Due to continuous improvements, specifications, marking and designs are subject to change without prior notice.

100mm V4 Submersible Pumpsets TS / TT Series, Magic Series

Range : 1 HP to 5 HP



Salient Features:

Better Efficiency with consistent Performance

All motors are designed to start and run at low voltages

Impeller and Diffusers are high quality 30% glass filled engineering Polymer

Motors are specially designed to start and run at low voltages

Rotors are treated with corrosion resistant epoxy paints

All rotating components are dynamically balanced for smooth operation

Heavy duty Specially designed Carbon Thrust Bearing

Easy assembly and disassembly for servicing

Material of Construction:

Part Name (Motor)	Material	Part Name (Pump)	Material
Motor Body	Stainless Steel	Pump Shaft	SS AISI 410
Motor Shaft	SS AISI 410 / 420	Suction Housing	CI FG 200 / SS
Bush Bearing	LTB 4 - Bronze	NRV	CI FG 200 / SS
Thrust Bearing	AISI - Carbon	Impeller	Noryl – GFN3
Bearing Housing	CI FG 200 / 250	Diffuser	Noryl – GFN3
Stamping	CRNO – Silicon Steel		

Applications:

Domestic Water Supply

Solar Pumping Station

Lawns and Gardens

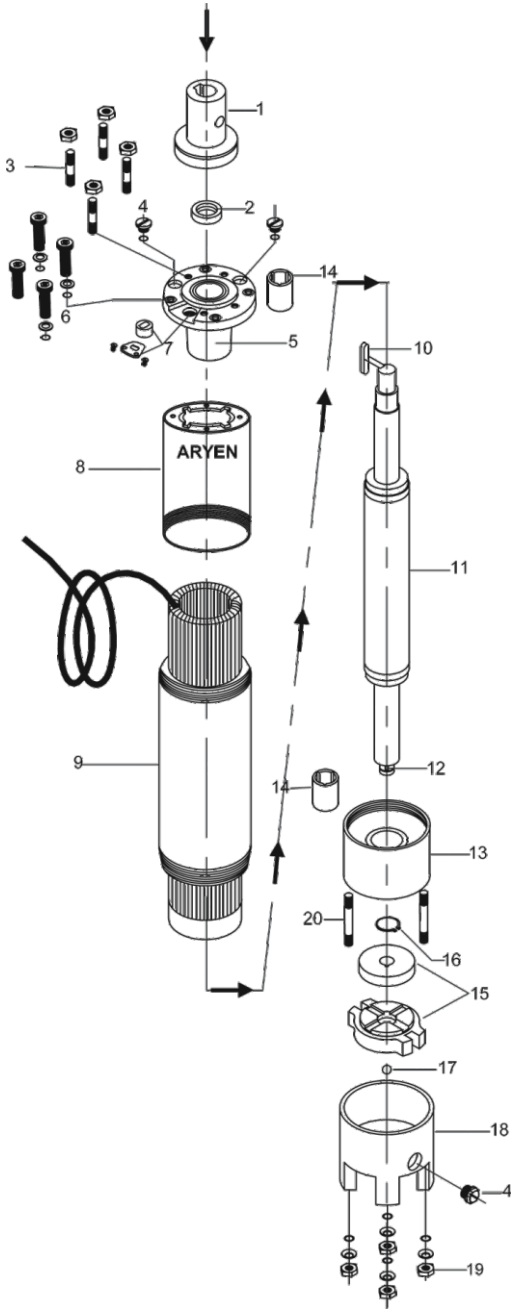
Housing Complex, Apartments



V4 MOTOR

TS / TT Series

EXPLODED VIEW

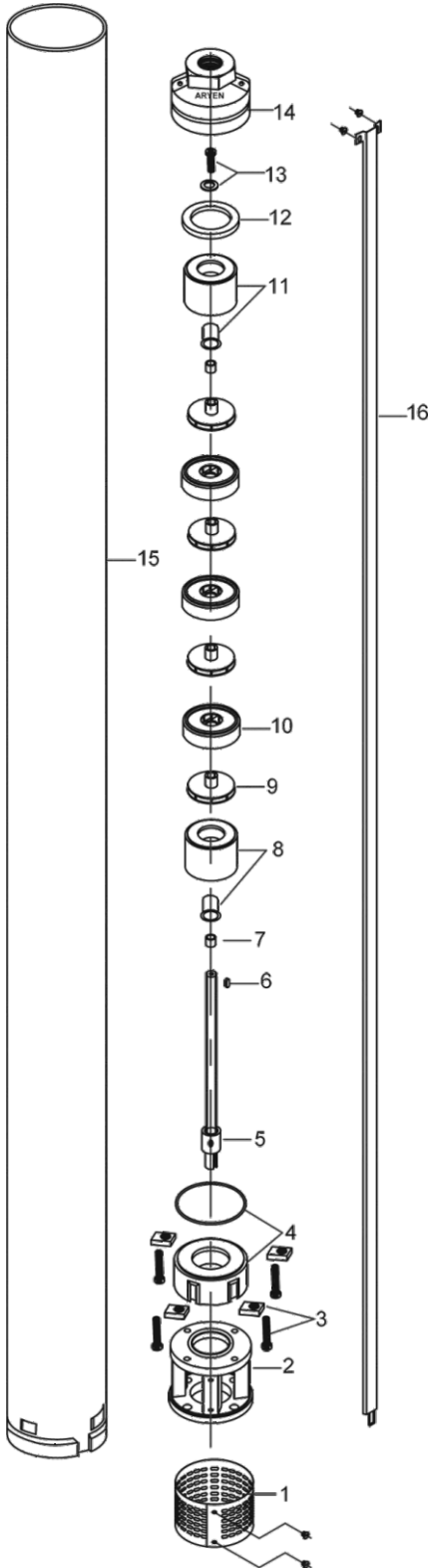


SPARE PARTS LIST

Sl.No.	Part Description	Qty
1	Coupling With Sand Guard	1
2	Oil Seal	1
3	Top Stud With Nut (M8)	4
4	Drain Plug Nut With 'O' Ring	3
5	Top Housing	1
6	Allen Bolt (M8) With Plain Washer & 'O' Ring	4
7	Cromet Rubber & Cromet Lock Plate & Screw	1
8	Top Housing Pipe	1
9	Motor Body With Winding	1
10	Coupling Key	1
11	Rotor Shaft Assembly	1
12	Thrust Bearing Key	1
13	Bottom Housing	1
14	Top & Bottom Housing LTB Bush	4
15	Thrust Bearing Set	1
16	Bearing Circlip	1
17	Steel Ball	1
18	Motor Leg	1
19	Bend Washer & 'O' Ring & Nut (M8)	4
20	Bottom Stud (M8)	4

V4 PUMP

EXPLODED VIEW



SPARE PARTS LIST

Sl.No.	Part Description	Qty
1	Strainer With CSK Screw.	1
2	Inlet Brocket.	1
3	Allen Head Bolt (M8) & Lock Nut.	4
4	Lock Plate With 'O' Ring.	1
5	Pump Shaft.	1
6	D.O.L Key.	Stages
7	Bottom D.O.L Sleeve.	1
8	Bottom D.O.L With Rubber Bush.	1
9	Impeller.	Stages
10	Diffuser Casing.	Stages
11	Top D.O.L With Rubber Bush.	1
12	NRV Rubber Washer.	1
13	Shaft Top Bolt (M6) & Plain Washer.	1
14	Non Return Valve (1¼" or 1½" or 2).	1
15	Pump Jacket.	1
16	Cable Guard With CSK Screw.	1



SELECTION CHART FOR 100mm (4") SUBMERSIBLE PUMPSET

Performance Charts at 2900 rpm, 1Ø, 240Volts / 3Ø, 400Volts / 50Hz AC Supply
Max. Pumpset Diameter - 98 mm

TS / TT - THREADED SINGLE & THREE PHASE

MATERIAL OF CONSTRUCTION - IMPELLER & DIFFUSER : NORYL

S. No.	Model	HP	Stages	Discharge											Shut Off
				LPH	4680	4320	3600	3240	2880	2520	2160	1620	1080	720	
				LPM	78	72	60	54	48	42	36	27	18	12	
1	TS 0507	0.5	7	HEAD IN METERS			10	13	22	28	32	40	44	49	52
2	TS 0710	0.75	10				18	23	29	39	47	54	63	67	72
3	TS / TT 1007	1	7		29	27	36	40	44	46	49	51	53		57
4	●★ TSE / TT 1009	1	9		30	35	43	48	51	56	58	62	64	66	70
5	TS 1010	1	10		25	33	44	48	52	58	61	67	70	72	77
6	● TSE / TT 1012	1	12				16	24	30	41	51	65	77	81	88
7	●★ TSE / TT 1014	1	14				18	28	37	52	60	77	90	95	103
8	TS 1015	1	15				24	32	35	50	65	80	95	100	110
9	TS / TT 1510	1.5	10		38	43	55	58	60	65	68	70	72		79
10	●★ TSE / TT 1514	1.5	14		45	55	65	72	80	85	90	95	97	100	110
11	● TSE / TT 1518	1.5	18				30	40	57	70	80	102	115	120	132
12	●★ TSE / TT 1521	1.5	21				40	50	62	83	100	115	135	142	153
13	● TS / TT 2016	2	16			53	71	78	85	93	98	108	112	116	124
14	●★ TSE / TT 2018	2	18			60	80	88	96	105	110	121	126	130	140
15	TS / TT 2020	2	20			66	88	97	105	116	122	135	140	144	155

Delivery Size : 32 mm

S. No.	Model	HP	Stages	Discharge										Shut Off	
				LPH	4320	3600	3240	2880	2520	2160	1800	1620	1080		720
				LPM	72	60	54	48	42	36	30	27	18		12
16	● TSE / TT 2025	2	25	HEAD IN METERS		32	37	56	80	105	117	122	150	168	180
17	● TSE / TT 2028	2	28			36	56	74	104	117	131	136	168	188	202
18	●★ TSE / TT 2030	2	30			48	64	94	120	140	150	162	184	192	208
19	● TS / TT 3025	3	25		83	111	122	133	146	153	164	168	175	181	194
20	●★ TSE / TTE 3030	3	30		90	123	135	144	157	173	180	188	195	202	216

Delivery Size : 32 mm

★ Star Rated ● ISI Marking

Note : Due to continuous improvements, specifications, marking and designs are subject to change without prior notice.



SELECTION CHART FOR 100mm (4") SUBMERSIBLE PUMPSET

Performance Charts at 2900 rpm, 1Ø, 240Volts / 3Ø, 400Volts / 50Hz AC Supply

TSD / TTD - THREADED SINGLE & THREE PHASE HIGH DISCHARGE

MATERIAL OF CONSTRUCTION - IMPELLER & DIFFUSER : NORYL

S. No.	Model	HP	Stages	Discharge										Shut Off	
				LPH	9000	8280	7920	7200	6300	5400	4500	3600	2880		
				LPM	150	138	132	120	105	90	75	60	48		
22	TSD / TTD 1007	1	7	HEAD IN METERS				12	16	20	28	30	32	34	40
23	TSD / TTD 1510	1.5	10					17	23	29	40	43	46	49	57
24	TSD / TTD 2015	2	15				21	26	35	44	60	65	69	74	86
25	● TSD / TTD 3020	3	20				28	35	47	59	80	87	92	99	115
26	● TSD / TTD 3022	3	22			27	31	39	52	65	88	96	101	109	127

Delivery Size : 40 mm

S. No.	Model	HP	Stages	Discharge										Shut Off	
				LPH	10800	9900	9000	8280	7920	7200	6300	5400	4500		
				LPM	180	165	150	138	132	120	105	90	75		
27	TSD / TTD 1005	1	5	HEAD IN METERS				5	17	21	22	23	24	25	33
28	TSD / TTD 1507	1.5	7			10	16	21	24	27	32	37	39	42	45
29	TSD / TTD 2010	2	10			18	24	32	35	40	46	51	53	58	65
30	TSD / TTD 3015	3	15			20	31	42	52	58	63	70	78	85	96

Delivery Size : 50 mm

TSM / TTM - THREADED SINGLE & THREE PHASE MIXED FLOW

S. No.	Model	Motor	HP	Stages	Discharge										Shut Off		
					LPH	21600	18000	14400	12600	10800	9000	7200	5400	3600			
					LPM	360	300	240	210	180	150	120	90	60			
31	TSM / TTM 1003	V4	1	3	HEAD IN METERS												
32	TSM / TTM 2006	V4	2	6			3	6	7	8	9	10	11	12	13	14	
33	TSM / TTM 3009	V4	3	9			8	12	16	17	18	20	22	24	25	28	
34	TSM / TTM 4012	V4	4	12			12	18	23	26	28	30	32	35	37	42	

Delivery Size : 50 mm

★ Star Rated ● ISI Marking

Note : Due to continuous improvements, specifications, marking and designs are subject to change without prior notice.



SELECTION CHART FOR 100mm (4") SUBMERSIBLE PUMPSET

Performance Charts at 2900 rpm, 1Ø, 240Volts / 3Ø, 400Volts / 50Hz AC Supply

HDC - HIGH DEPTH STAINLESS STEEL CUP MODELS

MATERIAL OF CONSTRUCTION - IMPELLER & DIFFUSER : NORYL

S. No.	Model	HP	Stages	Discharge											Shut Off
				LPH	4680	4320	3600	3240	2880	2520	2160	1620	1080	720	
				LPM	78	72	60	54	48	42	36	27	18	12	
1	HDC 0710	0.75	10	HEAD IN METERS			18	23	29	39	47	54	63	67	72
2	HDC 1009	1	9		30	35	43	48	51	56	58	62	64	66	70
3	HDC 1012	1	12				16	24	30	41	51	65	77	81	88
4	HDC 1014	1	14				18	28	37	52	60	77	90	95	103
5	HDC 1514	1.5	14		45	55	65	72	80	85	90	95	97	100	110
6	HDC 1518	1.5	18				30	40	57	70	80	102	115	120	132
7	HDC 1521	1.5	21				40	50	62	83	100	115	135	142	153
8	HDC 2018	2	18			60	80	88	96	105	110	121	126	130	140

Delivery Size : 32 mm

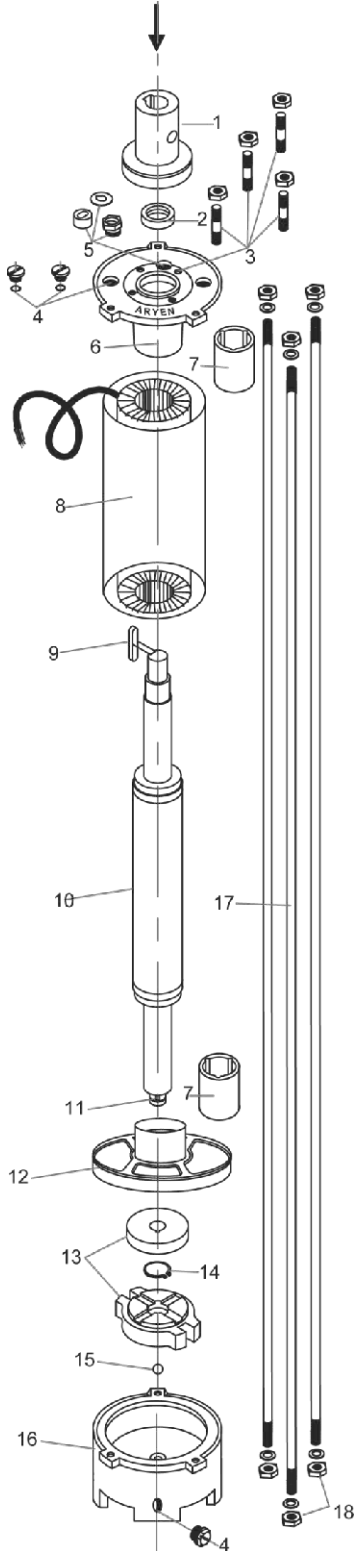
S. No.	Model	HP	Stages	Discharge											Shut Off
				LPH	4320	3600	3240	2880	2520	2160	1800	1620	1080	720	
				LPM	72	60	54	48	42	36	30	27	18	12	
9	HDC 2025	2	25	HEAD IN METERS		32	37	56	80	105	117	122	150	168	180
10	HDC 3025	3	25		83	111	122	133	146	153	164	168	175	181	194

Delivery Size : 32 mm

Note : Due to continuous improvements, specifications, marking and designs are subject to change without prior notice.

DOMESTIC OPENWELL PUMPSET (WELL SERIES)

EXPLODED VIEW



SPARE PARTS LIST

Sl.No.	Part Description	Qty
1	Coupling With Sand Guard.	1
2	Oil Seal.	1
3	Top Stud With Nut (M8).	4
4	Drain Plug Nut With 'O' Ring.	3
5	Cromet Rubber & Cromet Lock Plate & Screw.	1
6	Top Housing.	1
7	Top & Bottom Housing LTB Bush.	2
8	Motor Body With Winding.	1
9	Coupling Key.	1
10	Rotor Shaft Assembly.	1
11	Thrust Bearing Key.	1
12	Bottom Housing.	1
13	Thrust Bearing Set.	1
14	Bearing Circlip.	4
15	Steel Ball.	1
16	Motor Leg.	1
17	Motor Tie Rod.	3
18	M8 Nut & Plain Washer.	3





OPENWELL MOTOR COUPLED WITH 4" PUMP

SELECTION CHART FOR DOMESTIC OPENWELL SUBMERSIBLE PUMPSET

Performance Charts at 2900 rpm, 1Ø, 240Volts / 3Ø, 400Volts / 50Hz AC Supply

AWS - ARYEN WELL SINGLE PHASE

MATERIAL OF CONSTRUCTION - IMPELLER & DIFFUSER : NORYL

S. No.	Model	HP	Stages	Discharge											Shut Off
				LPH	4680	4320	3600	3240	2880	2520	2160	1620	1080	720	
				LPM	78	72	60	54	48	42	36	27	18	12	
1	AWS 1009	1	9	HEAD IN METERS	30	35	43	48	51	56	58	62	64	66	70
2	AWS 1012	1	12				16	18	27	39	51	59	73	78	87
3	AWS 1014	1	14				18	28	37	52	60	77	85	90	99
4	AWS 1514	1.5	14		45	52	65	67	72	79	83	89	92	95	102
5	AWS 1518	1.5	18				18	30	40	60	70	90	103	110	123
6	AWS 2018	2	18			60	80	88	96	105	110	121	126	132	140

Delivery Size : 32 mm

S. No.	Model	HP	Stages	Discharge										Shut Off
				LPH	9000	8280	7920	7200	6300	5400	4500	3600	2880	
				LPM	150	138	132	120	105	90	75	60	48	
7	AWS 1007	1	7	HEAD IN METERS	7	12	14	19	25	29	33	35	38	50
8	AWS 1510	1.5	10		11	17	20	27	35	42	47	51	55	62
9	AWS 2015	2	15		16	25	30	40	53	63	70	76	82	93

Delivery Size : 40 mm

S. No.	Model	HP	Stages	Discharge										Shut Off
				LPH	9000	8280	7920	7200	6300	5400	4500	3600	2880	
				LPM	150	138	132	120	105	90	75	60	48	
10	AWS 1507	1.5	7	HEAD IN METERS	21	25	28	32	37	40	43	47	49	53
11	AWS 2010	2	10		26	31	35	40	46	50	54	59	61	66

Delivery Size : 50 mm

Note : AWT - Aryen Well Three Phase Models available on special order basis at same price

Note : Due to continuous improvements, specifications, marking and designs are subject to change without prior notice.



Openwell Submersible Pumpsets

Vertical Openwell Submersible Pumpsets

Range : 3 HP to 30 HP

Salient Features:

Better Efficiency with consistent Performance

Robust Construction ensuring high durability

Corrosion free Stainless Steel Shaft

All motors are designed to start and run at low voltages

Rotors are treated with corrosion resistant epoxy paints

All rotating components are dynamically balanced for smooth operation

Highly durable oil seal protects the motor from foreign particles

Heavy duty Carbon Thrust Bearing protects the pumpset from thrust loads

SS fasteners for high durability and ease of maintenance

Easy assembly and disassembly for servicing



Material of Construction:

Part Name (Motor)	Material	Part Name (Pump)	Material
Motor Body	CI FG 200	Front and Rear Housing	CI FG 200
Motor Shaft	SS AISI 410 / 420	NRV	CI FG 200
Bush Bearing	LTB 4 - Bronze	Impeller	CI FG 200/SS 410
Thrust Bearing	AISI - Carbon	Diffuser	CI FG 200
Bearing Housing	CI FG 200 / 250	Strainer	Stainless Steel
Stamping	CRNO – Silicon Steel		
Rotor	Copper (99.99%)		

Applications:

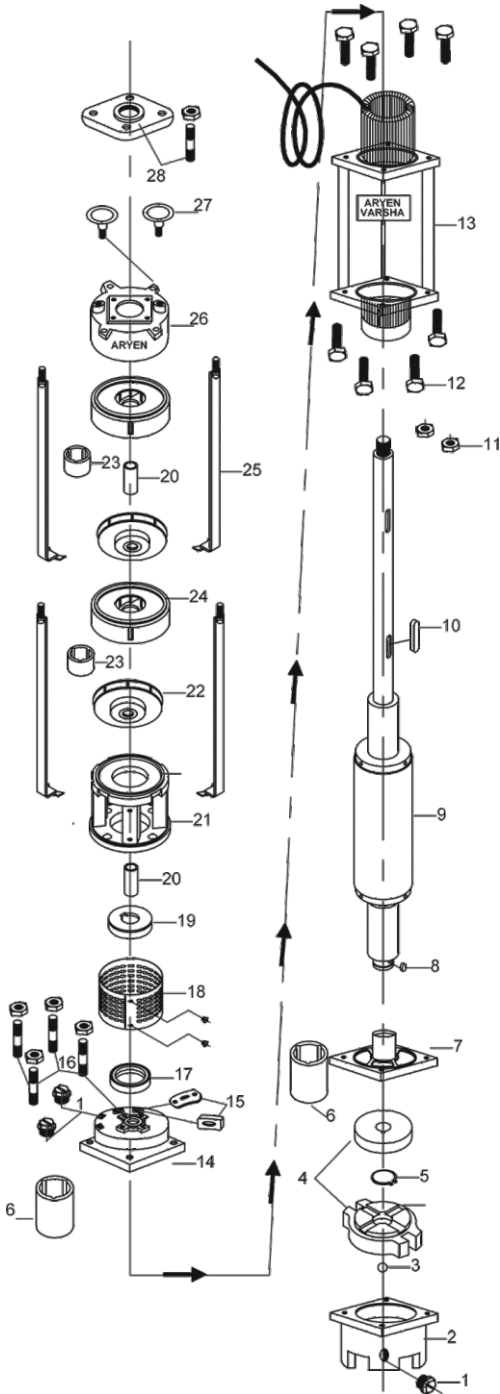
Irrigation from Openwell / Ponds / Canals / River

Drip Irrigation

Sprinkler Irrigation

VERTICAL OPENWELL PUMPSET (AVW SERIES)

EXPLODED VIEW

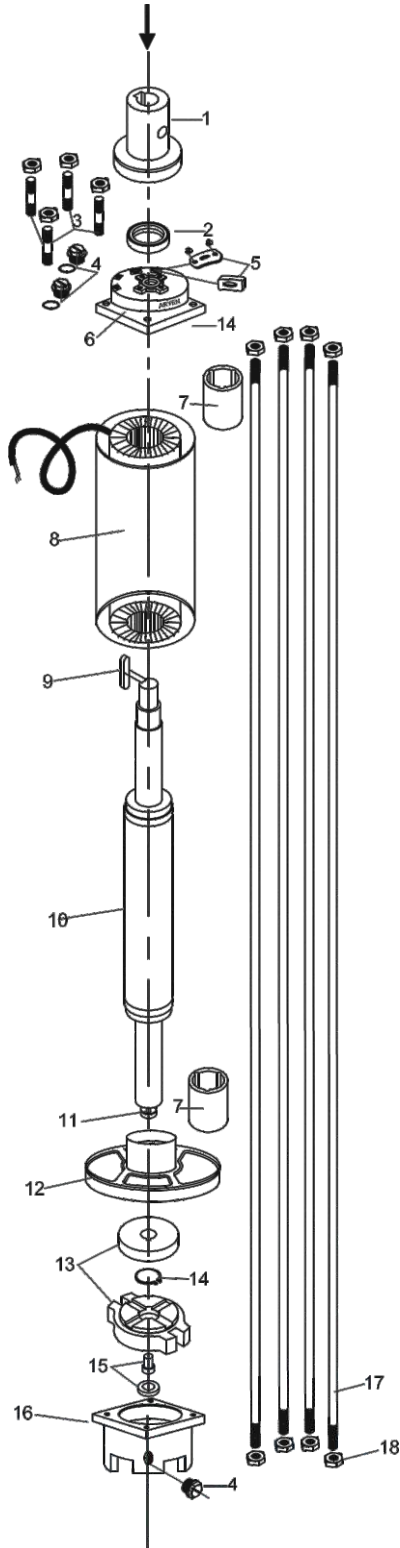


SPARE PARTS LIST

Sl.No.	Part Description	Qty
1	Drain Plug Nut With 'O' Ring	3
2	Leg	1
3	Steel Ball	1
4	Thrust Bearing Set	1
5	Bearing Circlip	1
6	Top & Bottom Housing LTB Bush	2
7	Bottom Housing	2
8	Thrust Bearing Key	1
9	Rotor Shaft Assembly	1
10	Stage Key	As Per Stage
11	Lock Nut	2
12	Hex Bolt M10	8
13	Motor Body Assembly	1
14	Top Housing	1
15	Cromet Rubber & Lock Plate	1
16	M10 Stud with Nut	4
17	Oil Seal	1
18	Strainer with CSK Screw	1
19	Sand Guard	1
20	Sleeve	As Per Stage
21	Inlet Bracket	1
22	Impeller	As Per Stage
23	Casing GM Bush	As Per Stage
24	Diffuser Casing	As Per Stage
25	Pump Patta	4
26	Delivery Casing (2½" Delivery)	1
27	Eye Bolt	2
28	Delivery Flange	1

VERTICAL OPENWELL PUMPSET (DAM SERIES)

EXPLODED VIEW



SPARE PARTS LIST

Sl.No.	Part Description	Qty
1	Coupling with Send Guard	1
2	Oil Seal	1
3	Top Stud with Nut (M12)	4
4	Drain Plug Nut with 'O' Ring	3
5	Cromet Rubber & Cromet Lock Plate & Screw	2 (4 Screw)
6	Top Cover	1
7	Top & Bottom Housing LTP Bush	2
8	Motor Body with Winding	1
9	Coupling Key	1
10	Rotor Shaft Assembly	1
11	Thrust Bearing Key	1
12	Bottom Housing	1
13	Thrust Bearing Set	1
14	Bearing Circlip	4
15	Bearing Rocker	1 Set
16	Motor Leg	1
17	Motor Tie Rod	4
18	M12 Nut	4



SELECTION CHART FOR VERTICAL OPENWELL SUBMERSIBLE PUMPSET

Performance Charts at 2900 rpm, 3Ø, 400Volts / 50Hz AC Supply

AVW / DR - ARYEN VERTICAL OPENWELL / DAM RADIAL FLOW

MATERIAL OF CONSTRUCTION - IMPELLER : CI, DIFFUSER : CI

AVW / DR - 500				Discharge								Shut Off	Delivery Size : 75 mm
S. No.	Model	HP	Stages	LPH	68400	64800	57600	50400	46800	43200	36000		
				LPM	1140	1080	960	840	780	720	600		
				LPS	19	18	16	14	13	12	10		
1	AVW 5/1	5	1	HEAD IN METERS	6	10	13	17	18	19	21	26	
2	AVW 10/2	10	2		10	21	27	33	36	38	41	45	52
3	DR 15/3	15	3		16	23	34	44	49	53	59	65	73
4	DR 20/4	20	4		21	30	45	58	65	70	79	87	97
5	DR 25/5	25	5		26	38	56	73	81	88	99	111	121
6	DR 30/6	30	6		31	46	67	88	97	106	119	135	145

AVW / DR - 400				Discharge								Shut Off	Delivery Size : 65 mm
S. No.	Model	HP	Stages	LPH	54000	50400	46800	43200	39600	36000	28800		
				LPM	900	840	780	720	660	600	480		
				LPS	15	14	13	12	11	10	8		
7	AVW 7/2	7.5	2	HEAD IN METERS	12	17	21	25	29	33	38	47	
8	DR 12/3	12.5	3		18	25	31	37	43	49	57	67	70
9	DR 15/4	15	4		24	34	42	50	58	66	76	89	94
10	DR 20/5	20	5		30	42	52	62	72	82	95	111	117
11	DR 25/6	25	6		36	50	62	74	86	98	114	134	140
12	DR 30/8	30	8		48	67	83	99	115	131	152	180	187

AVW / DR - 333				Discharge								Shut Off	Delivery Size : 65 mm
S. No.	Model	HP	Stages	LPH	54000	50400	46800	43200	39600	36000	28800		
				LPM	900	840	780	720	660	600	480		
				LPS	15	14	13	12	11	10	8		
13	AVW 10/3	10	3	HEAD IN METERS	16	22	29	34	40	45	52	67	
14	DR15/5	15	5		22	35	43	51	64	72	85	108	
15	DR 20/6	20	6		30	45	58	65	80	90	105	134	
16	DR 25/8	25	8		38	56	73	81	100	113	131	168	
17	DR 30/10	30	10		48	70	91	101	125	141	164	210	

Note : Due to continuous improvements, specifications, marking and designs are subject to change without prior notice.



SELECTION CHART FOR VERTICAL OPENWELL SUBMERSIBLE PUMPSET

Performance Charts at 2900 rpm, 3Ø, 400Volts / 50Hz AC Supply

AVW / DR - ARYEN VERTICAL OPENWELL / DAM RADIAL FLOW

AVW / DR - 250					Discharge								Shut Off	Delivery Size : 65 mm
S. No.	Model	HP	Stages	LPH	43200	39600	36000	32400	28800	25200	18000			
				LPM	720	660	600	540	480	420	300			
				LPS	12	11	10	9	8	7	5			
18	● AVW 4	5	2	HEAD IN METERS	12	16	22	26	29	33	38	43		
19	● AVW 8	7.5	3		18	25	33	39	45	50	56	66		
20	● AVW 14	10	4		24	33	44	52	60	67	75	88		
21	DR12/5	12.5	5		30	42	55	65	73	83	92	107		
22	DR15/6	15	6		36	50	67	78	88	99	110	128		
23	DR20/8	20	8		50	70	90	105	125	140	155	179		
24	DR 25/10	25	10		63	88	113	131	156	175	194	224		
25	DR 30/12	30	12		76	106	136	157	187	210	233	269		

AVW / DR - 200					Discharge								Shut Off	Delivery Size : 65 mm
S. No.	Model	HP	Stages	LPH	39600	36000	32400	28800	25200	18000	14400			
				LPM	660	600	540	480	420	300	240			
				LPS	11	10	9	8	7	5	4			
26	AVW 7/4	7.5	4	HEAD IN METERS	20	30	40	48	55	67	69	84		
27	DR 10/5	10	5		25	38	50	60	69	84	86	105		
28	DR 12/6	12.5	6		23	38	53	68	79	96	101	124		
29	DR 15/8	15	8		30	50	70	90	105	128	135	165		
30	DR 20/10	20	10		38	63	88	113	131	160	169	206		

AVW / DR - 166					Discharge								Shut Off	Delivery Size : 65 mm
S. No.	Model	HP	Stages	LPH	28800	27000	25200	21600	18000	14400	10800			
				LPM	480	450	420	360	300	240	180			
				LPS	8	7.5	7	6	5	4	3			
31	AVW 5/3	5	3	HEAD IN METERS	26	32	36	42	50	54	59	63		
32	DR 10/6	10	6		52	64	72	84	100	108	118	126		
33	DR 15/10	15	10		78	96	108	126	150	162	177	189		
34	DR 20/12	20	12		104	128	144	168	200	216	236	252		

★ Star Rated ● ISI Marking

Note : Due to continuous improvements, specifications, marking and designs are subject to change without prior notice.



SELECTION CHART FOR VERTICAL OPENWELL SUBMERSIBLE PUMPSET

Performance Charts at 2900 rpm, 3Ø, 400Volts / 50Hz AC Supply

AVW / DM - ARYEN VERTICAL OPENWELL / DAM MIXED FLOW

MATERIAL OF CONSTRUCTION IMPELLER : SS, BOWL : CI / SS

AVW / DM - 1000														
S. No.	Model	HP	Stages	Discharge									Shut Off	Delivery Size : 150 mm
				LPH	144000	133200	126000	108000	90000	72000	54000			
				LPM	2400	2220	2100	1800	1500	1200	900			
				LPS	40	37	35	30	25	20	15			
1	● DM 10/1	10	1	HEAD IN METERS	7	10	13	16	18	20	22	26		
2	● DM 20/2	20	2		10	20	25	32	37	40	44	52		
3	● DM 30/3	30	3		21	30	39	48	54	60	66	78		

AVW / DM - 750														
S. No.	Model	HP	Stages	Discharge									Shut Off	Delivery Size : 100 mm
				LPH	129600	122400	108000	97200	86400	72000	50400			
				LPM	2160	2040	1800	1620	1440	1200	840			
				LPS	36	34	30	27	24	20	14			
4	● DM 7/1	7	1	HEAD IN METERS	6	8	10	12	15	17	20	26		
5	● DM 15/2	15	2		14	18	23	25	30	35	40	50		
6	● DM 25/3	25	3		21	27	35	38	45	51	60	72		
7	● DM 30/4	30	4		28	36	46	50	60	68	80	100		

AVW / DM - 625														
S. No.	Model	HP	Stages	Discharge									Shut Off	Delivery Size : 100 mm
				LPH	108000	97200	90000	81000	72000	54000	36000			
				LPM	1800	1620	1500	1350	1200	900	600			
				LPS	30	27	25	22.5	20	15	10			
8	● DM 12/2	12	2	HEAD IN METERS	13	20	23	27	30	35	40	46		
9	● DM 20/3	20	3		20	30	35	40	45	52	60	69		
10	● DM 25/4	25	4		28	40	48	56	60	68	80	92		
11	● DM 30/5	30	5		35	50	60	70	75	85	100	115		

AVW / DM - 500														
S. No.	Model	HP	Stages	Discharge									Shut Off	Delivery Size : 100 mm
				LPH	108000	97200	90000	81000	72000	54000	36000			
				LPM	1800	1620	1500	1350	1200	900	600			
				LPS	30	27	25	22.5	20	15	10			
12	● AVW 5M/1	5	1	HEAD IN METERS	6	8	9	10	12	15	17	20		
13	● DM 10/2	10	2		10	15	18	20	24	28	33	40		
14	● DM 15/3	15	3		15	22	27	30	36	42	49	60		
15	● DM 20/4	20	4		20	29	35	40	48	57	66	80		
16	● DM 25/5	25	5		30	40	45	50	60	75	85	100		
17	● DM 30/6	30	6		36	48	54	60	72	90	102	120		

● Stainless Steel Bowl with Stainless Steel Impeller - Available on special order basis
 Note : Due to continuous improvements, specifications, marking and designs are subject to change without prior notice.

Openwell Submersible Pumpsets

Vertical Openwell Motor Coupled with 6" Submersible Pumps

Range : 3 HP to 20 HP

Salient Features:

- Corrosion-resistant Graded Cast Iron parts
- Corrosion free Stainless Steel Shaft
- Better Efficiency with consistent Performance
- All motors are designed to start and run at low voltages
- Rotors are treated with corrosion resistant epoxy paints
- All rotating components are dynamically balanced for smooth operation
- Highly durable oil seal protects the motor from foreign particles
- LTB-4, Leaded Bronze bush with optimum wear resistance
- Heavy duty Specially designed Carbon Thrust Bearing
- Easy assembly and disassembly for servicing



Material of Construction:

Part Name (Motor)	Material	Part Name (Pump)	Material
Motor Body	CI FG 200	Front and Rear Housing	CI FG 200
Motor Shaft	SS AISI 410 / 420	NRV	CI FG 200
Bush Bearing	LTB 4 - Bronze	Impeller	SS 410
Thrust Bearing	AISI - Carbon	Diffuser	CI FG 200 / SS 302 / SS 410
Bearing Housing	CI FG 200 / 250	Strainer	Stainless Steel
Stamping	CRNO – Silicon Steel		
Rotor	Copper (99.99%)		

Applications:

- Irrigation from Openwell / Ponds / Canals / River
- Drip Irrigation
- Sprinkler Irrigation





SELECTION CHART FOR VERTICAL OPENWELL SUBMERSIBLE PUMPSET

Performance Charts at 2900 rpm, 3Ø, 400Volts, 50Hz AC Supply

Vertical Openwell Motor Coupled with 6” Radial Flow Pump

AVR - ARYEN VERTICAL OPENWELL RADIAL FLOW

MATERIAL OF CONSTRUCTION - IMPELLER : SS, DIFFUSER: CI

S. No.	Model	HP	Stages	Discharge								Shut Off	Delivery Size : 65 mm
				LPH	39600	32400	28800	25200	21600	14400	10800		
				LPM	660	540	480	420	360	240	180		
				LPS	11	9	8	7	6	4	3		
1	AVR 5/4	5	4	HEAD IN METERS	18	29	33	37	42	46	50	57	
2	AVR 6/5	6	5		23	36	41	46	53	58	63	71	
3	AVR 7/6	7.5	6		28	43	49	55	64	70	76	85	
4	AVR 10/8	10	8		37	57	65	73	85	93	101	113	
5	AVR 12/10	12.5	10		46	71	81	91	106	116	126	141	
6	AVR 15/12	15	12		55	85	97	109	127	139	151	169	
7	AVR 20/16	20	16		74	113	129	145	170	186	202	225	

S. No.	Model	HP	Stages	Discharge								Shut Off	Delivery Size : 50 mm
				LPH	32400	28800	25200	21600	18000	14400	10800		
				LPM	540	480	420	360	300	240	180		
				LPS	9	8	7	6	5	4	3		
8	AVR 3/3	3	3	HEAD IN METERS	13	19	25	31	33	35	37	43	
9	AVR 5/5	5	5		22	32	41	51	56	58	61	71	
10	AVR 6/6	6	6		27	39	49	61	66	70	73	85	
11	AVR 7/7	7.5	7		31	45	58	71	77	81	86	100	
12	AVR 7/8	7.5	8		35	51	66	82	88	93	98	114	
13	AVR 10/10	10	10		26	40	55	80	96	112	122	145	
14	AVR 12/12	12.5	12		31	48	66	96	116	135	147	174	
15	AVR 15/15	15	15		39	60	83	120	145	169	184	218	
16	AVR 20/20	20	20		52	80	110	160	193	225	245	290	

Note : Due to continuous improvements, specifications, marking and designs are subject to change without prior notice.



SELECTION CHART FOR VERTICAL OPENWELL SUBMERSIBLE PUMPSET

Performance Charts at 2900 rpm, 3Ø, 400Volts, 50Hz AC Supply
Vertical Openwell Motor Coupled with 6" Radial Flow Pump

AVR - ARYEN VERTICAL OPENWELL RADIAL FLOW

S. No.	Model	HP	Stages	Discharge								Shut Off	Delivery Size : 50 mm
				LPH	27000	25200	23400	19800	18000	14400	10800		
				LPM	450	420	390	330	300	240	180		
				LPS	7.5	7	6.5	5.5	5	4	3		
17	AVR 3/4	3	4	HEAD IN METERS	12	15	20	29	32	40	44	58	
18	AVR 5/6	5	6		16	23	32	49	51	61	68	88	
19	AVR 6/7	6	7		26	30	38	56	61	73	80	98	
20	AVR 6/8	6	8		30	34	43	64	70	83	92	112	
21	AVR 7/10	7.5	10		38	42	54	80	88	104	115	150	
22	AVR 10/12	10	12		45	51	65	96	105	125	138	181	
23	AVR 12/15	12.5	15		55	68	82	115	127	153	169	219	
24	AVR 12/16	12.5	16		59	73	88	123	136	163	180	234	
25	AVR 15/18	15	18		56	64	100	140	155	184	207	269	
26	AVR 15/20	15	20		62	71	111	155	172	204	230	298	

S. No.	Model	HP	Stages	Discharge							Shut Off	Delivery Size : 50 mm	
				LPH	19800	18000	16800	15000	12000	10200			8400
				LPM	330	300	280	250	200	170			140
				LPS	5.5	5	4.5	4.2	3.3	2.8			2.3
27	AVR 3/5	3	5	HEAD IN METERS	22	30	36	42	51	55	58		70
28	AVR 5/8	5	8		35	49	58	68	82	89	93		112
29	AVR 6/10	6	10		43	60	72	85	102	110	116		140
28	AVR 7/12	7.5	12		52	72	86	102	122	132	139		168
29	AVR 10/15	10	15		65	90	108	127	153	165	174		210
30	AVR 10/16	10	16		23	75	100	123	155	168	179		210
31	AVR 12/18	12.5	18		26	84	113	138	174	189	201	234	
32	AVR 12/20	12.5	20		28	94	125	154	194	210	236	260	

Note : Due to continuous improvements, specifications, marking and designs are subject to change without prior notice.



SELECTION CHART FOR VERTICAL OPENWELL SUBMERSIBLE PUMPSET

Performance Charts at 2900 rpm, 3Ø, 400Volts, 50Hz AC Supply
Vertical Openwell Motor Coupled with 6" Radial Flow Pump

AVR - ARYEN VERTICAL OPENWELL RADIAL FLOW

S. No.	Model	HP	Stages	Discharge							Shut Off
				LPH	16200	14400	12600	10800	9000	7200	
				LPM	270	240	210	180	150	120	
				LPS	4.5	4	3.5	3	2.5	2	
33	AVR 3/6	3	6	HEAD IN METERS	33	40	45	50	53	57	70
34	AVR 5/10	5	10		54	65	74	82	88	95	113
35	AVR 6/12	6	12		67	78	90	98	106	112	136
36	AVR 7/15	7.5	15		82	96	111	125	135	144	175
37	AVR 7/16	7.5	16		88	103	119	134	145	154	188
38	AVR 10/20	10	20		102	130	145	162	175	185	225
Delivery Size : 50 mm											

S. No.	Model	HP	Stages	Discharge							Shut Off
				LPH	15600	12600	10800	9000	7200	5400	
				LPM	260	210	180	150	120	90	
				LPS	4.3	3.5	3	2.5	2	1.5	
39	AVR 3/8	3	8	HEAD IN METERS	27	48	56	62	67	74	87
40	AVR 5/12	5	12		40	72	84	92	100	110	130
41	AVR 6/15	6	15		50	90	105	114	125	138	165
42	AVR 7/18	7.5	18		60	108	126	139	149	162	199
43	AVR 7/20	7.5	20		66	120	140	154	165	180	216
Delivery Size : 50 mm											

S. No.	Model	HP	Stages	Discharge							Shut Off
				LPH	10800	9000	7200	6000	4800	3600	
				LPM	180	150	120	100	80	60	
				LPS	3	2.5	2	1.6	1.3	1	
44	AVR 3/9	3	9	HEAD IN METERS	41	54	67	72	81	86	96
45	AVR 5/15	5	15		69	90	111	120	135	144	161
46	AVR 6/18	6	18		83	108	133	144	162	173	193
Delivery Size : 50 mm											

Note : Due to continuous improvements, specifications, marking and designs are subject to change without prior notice.



SELECTION CHART FOR VERTICAL OPENWELL SUBMERSIBLE PUMPSET

Performance Charts at 2900 rpm, 3Ø, 400Volts, 50Hz AC Supply
Vertical Openwell Motor Coupled with 6" Radial Flow Pump

AVM - ARYEN VERTICAL OPENWELL MIXED FLOW

MATERIAL OF CONSTRUCTION - IMPELLER : SS, DIFFUSER: CI / SS

S. No.	Model	HP	Stages	Discharge						Shut Off	Delivery Size : 65 mm
				LPH	39600	32400	28800	25200	21600		
				LPM	660	540	480	420	360		
				LPS	11	9	8	7	6		
1	● AVM 3/3	3	3	HEAD IN METERS	12	19	21	23	25	33	
2	● AVM 5/5	5	5		20	31	34	38	41	55	
3	● AVM 6/6	6	6		24	37	41	46	50	65	
4	● AVM 7/8	7.5	8		32	49	54	61	65	87	
5	● AVM 10/10	10	10		40	62	68	76	83	110	
6	AVM 12/12	12.5	12		48	75	82	92	98	130	

S. No.	Model	HP	Stages	Discharge						Shut Off	Delivery Size : 65 mm	
				LPH	46800	39600	32400	28800	25200			21600
				LPM	780	660	540	480	420			360
				LPS	13	11	9	8	7			6
7	● AVM 5/4	5	4	HEAD IN METERS	14	25	31	35	37	39	44	
8	● AVM 6/5	6	5		16	28	36	42	46	48	55	
9	● AVM 7/6	7.5	6		20	35	45	50	54	56	66	
10	● AVM 10/8	10	8		26	46	60	66	73	75	90	
11	● AVM 12/10	12.5	10		33	59	76	84	91	94	110	

S. No.	Model	HP	Stages	Discharge						Shut Off	Delivery Size : 65 mm	
				LPH	46800	39600	32400	28800	25200			21600
				LPM	780	660	540	480	420			360
				LPS	13	11	9	8	7			6
12	● AVM 3/3 SD	3	4	HEAD IN METERS		12	19	21	23	25	33	
13	● AVM 5/4 SD	5	4		14	25	31	35	37	39	44	
14	● AVM 5/5 SD	5	5		20	31	34	38	41	55		
15	● AVM 6/5 SD	6	5		16	28	36	42	46	48	55	
16	● AVM 6/6 SD	6	6		24	37	41	46	50	65		
17	● AVM 7/6 SD	7.5	6		20	35	45	50	54	56	66	
18	● AVM 7/7 SD	7.5	7		28	44	48	54	58	76		
19	● AVM 7/8 SD	7.5	8		32	49	54	61	65	87		
20	● AVM 10/8 SD	10	8		26	46	60	66	73	75	90	
21	● AVM 10/10 SD	10	10		40	62	68	76	83	110		
22	● AVM 12/10 SD	12.5	10		33	59	76	84	91	94	110	

● Stainless Steel Bowl with Stainless Steel Impeller - Available on special order basis

SD - Stud Type Bowls

Note : Due to continuous improvements, specifications, marking and designs are subject to change without prior notice.



SELECTION CHART FOR VERTICAL OPENWELL SUBMERSIBLE PUMPSET

Performance Charts at 2900 rpm, 3Ø, 400Volts, 50Hz AC Supply
Vertical Openwell Motor Coupled with 6" Radial Flow Pump

AVM - ARYEN VERTICAL OPENWELL MIXED FLOW

S. No.	Model	HP	Stages	Discharge						Shut Off	Delivery Size : 75 mm	
				LPH	60000	50400	39600	28800	21600			18000
				LPM	1000	840	660	480	360			300
				LPS	16.6	14	11	8	6			5
23	● AVM 3/2	3	2	HEAD IN METERS	10	12	14	16	18	20	23	
24	● AVM 5/3	5	3		16	19	25	26	28	30	33	
25	● AVM 6/4	6	4		20	23	27	32	36	38	44	
26	● AVM 7/5	7.5	5		25	30	35	40	44	47	55	
27	● AVM 10/6	10	6		32	38	50	52	56	60	66	
28	● AVM 12/8	12.5	8		40	48	56	64	72	76	88	
29	● AVM 15/10	15	10		50	60	70	80	88	95	110	

S. No.	Model	HP	Stages	Discharge						Shut Off	Delivery Size : 75 mm	
				LPH	72000	60000	48000	37200	27000			21600
				LPM	1200	1000	800	620	450			360
				LPS	20	16.6	13.3	10.3	7.5			6
30	AVM 6/3	6	3	HEAD IN METERS	8	17	23	27	31	34	36	
31	AVM 7/4	7.5	4		11	22	30	35	40	44	48	
32	AVM 10/5	10	5		14	28	38	44	50	55	60	
33	AVM 12/6	12.5	6		17	33	45	53	60	66	72	
34	AVM 15/8	15	8		22	44	60	70	80	88	95	
35	AVM 20/10	20	10		28	56	77	89	100	110	120	

● Stainless Steel Bowl with Stainless Steel Impeller - Available on special order basis
Note : Due to continuous improvements, specifications, marking and designs are subject to change without prior notice.

SD - Stud Type Bowls



SELECTION CHART FOR VERTICAL OPENWELL SUBMERSIBLE PUMPSET

Performance Charts at 2900 rpm, 3Ø, 400Volts, 50Hz AC Supply

AVR 50 - ARYEN VERTICAL OPENWELL HIGH HEAD SS RADIAL FLOW

MATERIAL OF CONSTRUCTION - IMPELLER : SS, DIFFUSER : SS

S. No.	Model	HP	Stages	Discharge						Shut Off	Delivery Size : 50 mm	
				LPH	18000	15600	13800	12000	9600			8400
				LPM	300	260	230	200	160			140
				LPS	5	4.3	3.8	3.3	2.6			2.3
1	AVR 50 - 5/6	5	6	HEAD IN METERS	35	50	60	66	75	80	90	
2	AVR 50 - 6/8	6	8	48	67	80	88	100	107	122		
3	AVR 50 - 7/10	7.5	10	60	84	100	110	125	133	150		

S. No.	Model	HP	Stages	Discharge						Shut Off	Delivery Size : 50 mm	
				LPH	24000	21600	18000	16200	15000			13200
				LPM	400	360	300	270	250			220
				LPS	6.6	6	5	4.5	4.1			3.6
4	AVR 50 - 5/5	5	5	HEAD IN METERS	30	40	50	55	60	65	75	
5	AVR 50 - 6/6	6	6	36	48	60	66	72	78	90		
6	AVR 50 - 7/8	7.5	8	48	64	80	88	96	104	120		
7	AVR 50 - 10/10	10	10	60	80	100	110	120	130	150		

S. No.	Model	HP	Stages	Discharge						Shut Off	Delivery Size : 65 mm	
				LPH	30000	27000	23400	21000	17400			13200
				LPM	500	450	390	350	290			220
				LPS	8.3	7.5	6.5	5.8	4.8			3.6
8	AVR 50 - 5/4	5	4	HEAD IN METERS	25	35	40	45	50	55	60	
9	AVR 50 - 6/5	6	5	32	44	50	57	63	69	75		
10	AVR 50 - 7/6	7.5	6	38	53	60	68	75	83	90		
11	AVR 50 - 10/8	10	8	50	70	80	90	100	110	120		
12	AVR 50 - 12/10	12.5	10	63	88	100	113	125	138	150		

Note : Due to continuous improvements, specifications, marking and designs are subject to change without prior notice.



SELECTION CHART FOR VERTICAL OPENWELL SUBMERSIBLE PUMPSET

Performance Charts at 2900 rpm, 3Ø, 400Volts, 50Hz AC Supply

AVR 50 - ARYEN VERTICAL OPENWELL HIGH HEAD SS RADIAL FLOW

S. No.	Model	HP	Stages	Discharge						Shut Off	Delivery Size : 65 mm	
				LPH	36000	32400	30000	27600	24600			21000
				LPM	600	540	500	460	410			350
					10	9	8.3	7.6	6.8	5.8		
13	AVR 50 - 5/3	5	3	HEAD IN METERS	18	22	26	30	33	37	45	
14	AVR 50 - 6/4	6	4		24	30	35	40	45	50	60	
15	AVR 50 - 7/5	7.5	5		30	37	44	50	56	63	75	
16	AVR 50 - 10/6	10	6		36	45	53	60	68	75	90	
17	AVR 50 - 12/8	12.5	8		48	60	70	80	90	100	120	
18	AVR 50 - 15/10	15	10		60	75	88	100	113	125	150	

S. No.	Model	HP	Stages	Discharge						Shut Off	Delivery Size : 65 mm	
				LPH	49200	44400	40800	37200	31200			27000
				LPM	820	740	680	620	520			450
					13.6	12.3	11.3	10.3	8.6	7.5		
19	AVR 50 - 6/3	6	3	HEAD IN METERS	15	23	26	30	34	38	45	
20	AVR 50 - 7/4	7.5	4		20	30	35	40	45	50	60	
21	AVR 50 - 10/5	10	5		25	38	44	50	56	63	75	
22	AVR 50 - 12/6	12.5	6		30	45	53	60	68	75	90	
23	AVR 50 - 15/7	15	7		35	53	61	70	79	88	105	
24	AVR 50 - 15/8	15	8		40	60	70	80	90	100	120	
25	AVR 50 - 20/10	20	10		50	75	88	100	113	125	150	

Note : Due to continuous improvements, specifications, marking and designs are subject to change without prior notice.

Openwell Submersible Pumpsets

Horizontal Openwell Submersible Pumpsets

Range : 3 HP to 10 HP

Salient Features:

- Robust Construction ensuring high durability
- Better Efficiency with consistent Performance
- SS fasteners for high durability and ease of maintenance
- Easy assembly and disassembly for servicing
- All motors are designed to start and run at low voltages
- Rotors are treated with corrosion resistant epoxy paints
- All rotating components are dynamically balanced for smooth operation
- Highly durable oil seal protects the motor from foreign particles
- Heavy duty Specially designed Carbon Thrust Bearing



Material of Construction:

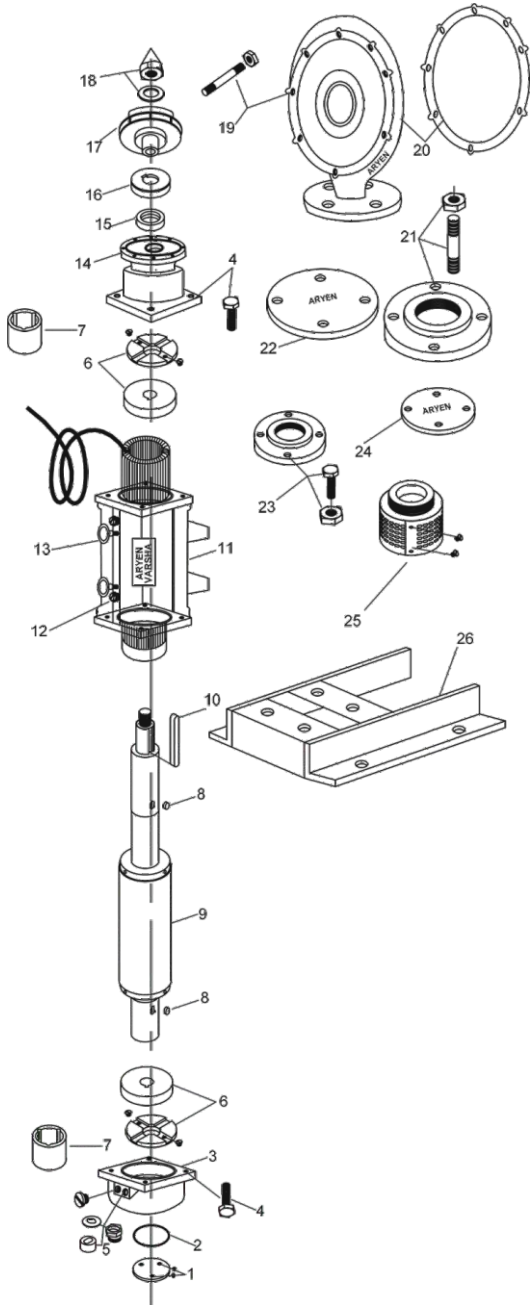
Part Name (Motor)	Material	Part Name (Pump)	Material
Motor Body	CI FG 200	Front and Rear Housing	CI FG 200
Motor Shaft	SS AISI 410 / 420	NRV	CI FG 200
Bush Bearing	LTB 4 - Bronze	Impeller	CI FG 200
Thrust Bearing	AISI - Carbon	Diffuser	CI FG 200
Bearing Housing	CI FG 200 / 250	Strainer	Stainless Steel
Stamping	CRNO – Silicon Steel		
Rotor	Copper (99.99%)		

Applications:

- Irrigation from Openwell / Ponds / Canals / River
- Drip Irrigation
- Sprinkler Irrigation

HORIZONTAL OPENWELL PUMPSET (TURBO SERIES)

EXPLODED VIEW

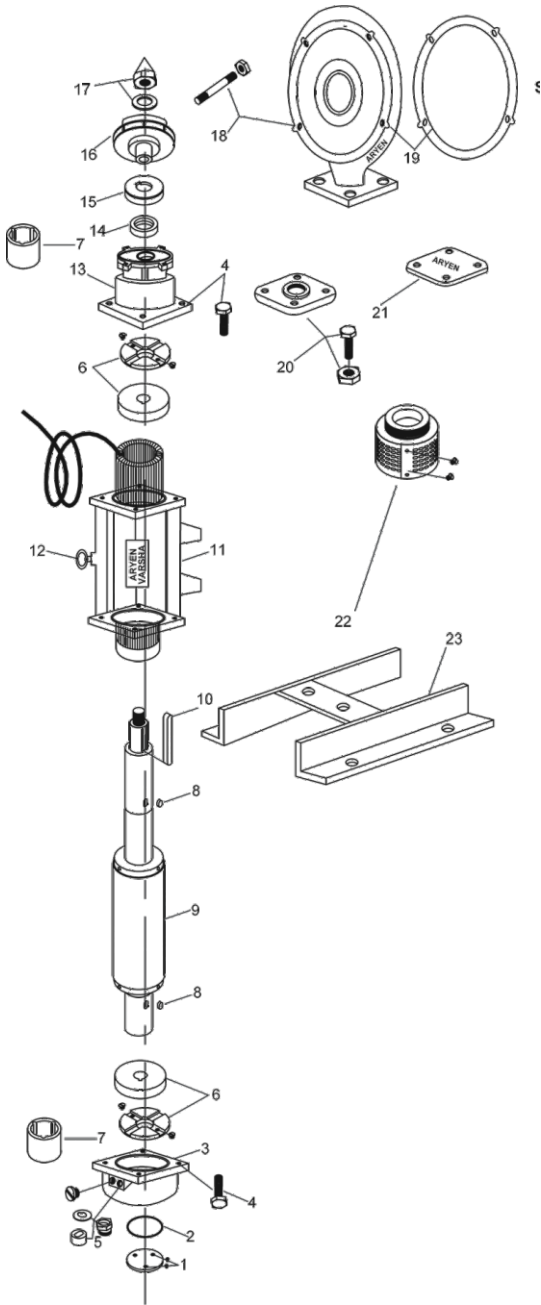


SPARE PARTS LIST

Sl.No.	Part Description	Qty
1	Back Cover Cap.	1
2	Back Cover 'O' Ring.	1
3	Back Cover.	1
4	Hex Bolt (M10).	8
5	Cromet Rubber & Cromet Lock Nut & Wahser.	1
6	Thrust Bearing Pad & Segment.	2
7	Front & Back Cover LTB Bush.	2
8	Thrust Bearing Key.	2
9	Rotor Shaft Assembly.	1
10	Impeller Key.	1
11	Motor Body Assembly.	1
12	Drain Plug Nut With 'O' Ring.	3
13	Eye Bolt.	2
14	Front & Back Cover Carbon Bush.	2
15	Front Cover.	1
16	Oil Seal.	1
17	Sand Guard.	1
18	Impeller.	1
19	Impeller Lock Nut & Washer.	1
20	Doom Stud (3/8") With Nut.	8
21	Doom With Rubber Washer.	1
22	Suction Flange With 5/8" Stud & Nut (2½" x 3" x 4").	1 - 4
23	Suction Flange Rubber Washer.	1
24	Delivery Flange With 1/2" Bolt & Nut (2 x 2½" x 3").	1 - 4
25	Delivery Flange Rubber Washer.	1
26	Delivery Filter With Strainer.	1
27	Motor Stand.	1

HORIZONTAL OPENWELL PUMPSET (AQUA SERIES)

EXPLODED VIEW



SPARE PARTS LIST

Sl.No.	Part Description	Qty
1	Back Cover cap.	1
2	Back Cover 'O' Ring.	1
3	Back Cover.	1
4	Hex Bolt (M10)	8
5	Cromet Rubber & Cromet Lock Nut & Washer.	1
6	Thrust Bearing Pad & Segment.	2
7	Front & Back Cover LTB Bush.	2
8	Thrust Bearing Key.	2
9	Rotor Shaft Assembly.	1
10	Impeller Key.	1
11	Motor Body Assembly.	1
12	Eye Bolt.	1
13	Front Cover.	1
14	Oil Seal.	1
15	Sand Guard.	1
16	Impeller.	1
17	Impeller Lock Nut & Washer.	1
18	Doom Stud (3/8") With Nut.	4
19	Doom With Rubber Washer.	1
20	(2 2" x 2") Delivery Flange With 1/2" Bolt & Nut.	1
21	Delivery Flange Rubber Washer	1 - 2
22	Delivery Filter With Strainer.	1
23	Motor Stand.	1

Monoblock Pumpsets

Range : 0.5 HP to 2 HP

Salient Features:



Corrosion free Stainless Steel Shaft

Non Overloading characteristics

Better Efficiency with consistent Performance

All motors are designed to start and run at low voltages

High quality mechanical seals / Gland packing

All rotating components are dynamically balanced for smooth operation

Highly durable oil seal protects the motor from foreign particles

High quality Anti Frictional Ball bearings

Easy assembly and disassembly for servicing



Material of Construction:

Part Name	Material
Motor Body	CI FG 200
Motor Shaft	SS AISI 410
Rotor	Aluminium Die Casting
Impeller	CI FG 200
Delivery Casing	CI FG 200
Fan Cover	Steel

Applications:

Water supply to houses and apartments

Hospital, Hotels, Construction Sites

Irrigation, Sprinkler, Farm Houses

Clean water handling in industries

SELECTION CHART FOR DOMESTIC HIGH SPEED MONOBLOCK PUMPSETS

Performance Charts at 2900 rpm, 1Ø, 240Volts, 50Hz AC Supply

S.No	Model	KW/HP	Amps	Run - Cap	Suction Delivery	Head in Meters											Shut Off								
						6	7	8	9	10	11	12	15	18	21	24		27	30	33	36				
1	ASM 425	0.37/0.5	3	10 mfd, 440 V AC	25 x 25	5300	5250	5200	5060	4950	4850	4700	4100	3000	1600										23 m
2	ASM 725	0.75/1.0	6.5	25 mfd, 440 V AC	25 x 25	5360	5310	5270	5230	5200	5160	5130	5000	4900	4710	4100	1950	360							31 m
3	ASM 732	0.75/1.0	6.5	25 mfd, 440 V AC	32 x 25				7130	6900	6700	6400	6300	6250	6000	5600	3300	1100							31 m
4	ASM 740	0.75/1.0	6.5	25 mfd, 440 V AC	40 x 40				28000	26000	22000	21000	7000	2600											21 m
5	ASM 750	0.75/1.0	6.5	25 mfd, 440 V AC	50 x 50	30600	27700	26500	25600	22700	18700	13500													14 m
6	ASM 1125	1.1/1.5	9	30 mfd, 440 V AC	25 x 25				6500	6400	6300	6100	5900	5700	5100	4950	4500	3500	1800						37 m
7	ASM 1132	1.1/1.5	9	30 mfd, 440 V AC	32 x 25				6900	6800	6650	6500	6100	5800	5400	5300	5000	4350	3200	900					40 m
8	ASM 1154	1.1/1.5	9	30 mfd, 440 V AC	50 x 40				28100	27000	24000	22200	17700	12600											20 m
9	ASM 1140	1.1/1.5	9	30 mfd, 440 V AC	40 x 40				28000	26500	24500	23600	20600	13350											20 m
10	ASM 1155	1.1/1.5	9	30 mfd, 440 V AC	50 x 50	28700	28100	27400	26000	24300	22500	20000	16000												21 m
11	ASM 1550	1.5/2.0	12	50 mfd, 440 V AC	50 x 50	29500	28500	27600	26900	24800	23000	21000	16850	12700											20 m
12	ASM 1565	1.5/2.0	12	50 mfd, 440 V AC	65 x 50	30000	29000	28100	27500	26000	22000	19000	14000												20 m

SELECTION CHART FOR DOMESTIC SLOW SPEED MONOBLOCK PUMPSETS

Performance Charts at 1440 rpm, 1Ø, 240Volts, 50Hz AC Supply

S.No	Model	KW/HP	Amps	Run - Cap	Suction x Delivery	Head in Meters											Shut Off
						6	9	12	15	18	21	24	27	30			
1	DMA 2N	0.37/0.5	3	12.5 mfd, 440 V AC	25 x 25	2760	2720	2400	2160	1920	1680	1440	1140	936	36 m		



Note : Due to continuous improvements, specifications, marking and designs are subject to change without prior notice.

Domestic Self Priming, Jet Pumpsets & Openwell

Range : 0.5 HP to 1 HP



Salient Features:

Easy to Handle

Robust Construction ensuring high durability

Corrosion free Stainless Steel Shaft

Better Efficiency with consistent Performance

All motors are designed to start and run at low voltages

Non overloading characteristics

All rotating components are dynamically balanced for smooth operation and long bearing life

Specially designed impeller with adequate clearance avoids jamming of Impellers

Easy assembly and disassembly for servicing



Material of Construction:

Part Name	Material – Self Priming Monoblock	Material – Shallow well Monoblock
Motor Body	Aluminium	Aluminium
Motor Shaft	SS AISI 410	SS AISI 410
Rotor	Aluminium Die Casting	Aluminium Die Casting
Impeller	High tensile Brass	Noryl



Applications:

Storage water tank

Construction Sites

Small farms

Lawns and Gardens

General industries



SELECTION CHART FOR DOMESTIC SELF PRIMING PUMPSETS

Performance Charts at 2900 rpm, 1Ø, 240Volts, 50Hz AC Supply

S.No	Model	KW/HP	Amps	Run - Cap	Suction x Delivery	Head in Meters											Shut Off		
						6	9	12	15	18	21	24	27	30	33	36		39	42
1	VSP 375	0.37/0.5	3	10 mfd, 440 V AC	25 x 25	2500	2340	1940	1720	1400	1260	920	680	300				34 m	
2	VSP 725	0.75/1.0	6.5	15 mfd, 440 V AC	25 x 25	3420	3310	3100	2880	2630	2340	2300	2220	2000	1880	1600	1500	1350	45 m

SELECTION CHART FOR DOMESTIC "V" TYPE SELF PRIMING PUMPSETS

Performance Charts at 2900 rpm, 1Ø, 240Volts, 50Hz AC Supply

S.No	Model	KW/HP	Amps	Run - Cap	Suction x Delivery	Head in Meters						Shut Off		
						6	9	12	15	18	21		24	27
1	ASV 425	0.37/0.5	3.5	15 mfd, 440 V AC	25 x 25	2300	1980	1700	1440	1150	930	720	400	29 m

SELECTION CHART FOR DOMESTIC SHALLOW WELL JET PUMPSETS

Performance Charts at 2900 rpm, 1Ø, 240Volts, 50Hz AC Supply

S.No	Model	KW/HP	Amps	Run - Cap	Suction x Delivery	Head in Meters											Shut Off	
						8	9	10	11	12	15	18	21	24	27	30		33
1	ASJ 1025	0.75/1.0	6.5	25 mfd, 440 V AC	25 x 25	3800	3750	3700	3650	3600	3550	3500	3450	3400	2500	1450	750	35 m

SELECTION CHART FOR DOMESTIC VERTICAL JET PUMPSETS

Performance Charts at 2900 rpm, 1Ø, 240Volts, 50Hz AC Supply

S.No	Model	KW/HP	Amps	Run - Cap	Suction x Delivery	Head in Meters											Shut Off
						21	24	27	30	33	36	39	42	45	48		
1	AVJ 1025	0.75/1.0	6.5	25 mfd, 440 V AC	32 x 25 x 25	1270	1185	1100	1000	870	750	630	510	415	325	56 m	

SELECTION CHART FOR DOMESTIC OPENWELL PUMPSETS

Performance Charts at 2900 rpm, 1Ø, 240Volts, 50Hz AC Supply

S.No	Model	KW/HP	Amps	Run - Cap	Suction x Delivery	Head in Meters											Shut Off
						6	9	12	15	18	21	24	27	30			
1	ASW 525	0.37/0.5	6	36 mfd, 440 V AC	25 x 25	8500	7500	6500	5700	4800	3800					24 m	
2	★ ASW 725	0.75/1.0	7.5	50 mfd, 440 V AC	25 x 25	10800	9300	8900	8500	8200	7800	7500	5000	3000	32 m		



★ Star Rated ● ISI Marking

Note : Due to continuous improvements, specifications, marking and designs are subject to change without prior notice.

Special Pumpsets

V4 (100 mm) Single & Three Phase Submersible Pumpsets

S.No.	Model	HP	Stage	Head Range (m)	Discharge (lph)
1	TS / TT 1018	1	18	30 / 120	3300 / 720
2	TS / TT 1525	1.5	25	36 / 170	3300 / 720
3	TS / TT 2035	2	35	75 / 230	3600 / 720
4	HDJ 3050	3	50	100 / 325	3600 / 720
5	HDJ 4035	4	35	80 / 240	6500 / 2100

V5 (125 mm) Three Phase Submersible Pumpsets

S.No.	Model	Motor	HP	Stage	Head Range (m)	Discharge (lph)
1	HH 5042	V4 / V5	5	42	100 / 295	6500 / 2100
2	HD 6050	V5	6	50	120 / 270	10000 / 3600

V6 (150 mm) Single Phase Submersible Pumpsets

S.No.	Model	HP	Stage	Head Range (m)	Discharge (lpm)
1	ARS 3/3	3	3	17 / 33	500 / 240
2	ARS 3/4	3	4	18 / 40	420 / 220
3	ARS 3/5	3	5	20 / 50	330 / 180
4	ARS 3/6	3	6	35 / 55	260 / 120
5	ARS 3/8	3	8	45 / 70	210 / 90
6	ARS 3/9	3	9	45 / 81	180 / 80
7	ARS 3/10	3	10	45 / 90	180 / 60
8	ARS 5/4	5	4	30 / 42	500 / 240
9	ARS 5/5	5	5	25 / 55	500 / 240
10	ARS 5/6	5	6	26 / 60	420 / 240
11	ARS 5/8	5	8	32 / 80	330 / 180
12	ARS 5/10	5	10	58 / 90	260 / 120
13	ARS 5/12	5	12	65 / 105	210 / 90
14	ARS 5/15	5	15	68 / 130	180 / 60
15	ARS 5/17	5	17	75 / 143	180 / 60

Note : Pumpsets available only on Special Order Basis.

Quote for the above Special Pumpsets available only on request.

CABLE SELECTION CHART

SUBMERSIBLE PUMPSET CABLE SELECTION CHART FOR
415 Volts - THREE PHASE - 50 Hz

HP	LENGTH IN METRES																					
	10	20	30	40	50	60	70	80	90	100	120	140	160	180	200	250	300	350	400	450	500	
3	1.5	1.5	1.5	1.5	1.5	1.5	1.5	1.5	1.5	1.5	1.5	2.5	2.5	2.5	2.5	4	4	4	6	6	6	
4	1.5	1.5	1.5	1.5	1.5	1.5	1.5	1.5	1.5	1.5	2.5	2.5	2.5	4	4	4	6	6	6	6	10	10
5	1.5	1.5	1.5	1.5	1.5	1.5	1.5	1.5	2.5	2.5	2.5	2.5	4	4	4	6	6	6	10	10	10	10
6	1.5	1.5	1.5	1.5	1.5	1.5	2.5	2.5	2.5	2.5	2.5	4	4	4	6	6	6	10	10	10	10	16
7.5S	2.5	2.5	2.5	2.5	2.5	2.5	2.5	2.5	4	4	4	4	4	4	6	6	6	10	10	10	16	16
7.5D	1.5	1.5	1.5	1.5	1.5	1.5	1.5	1.5	1.5	1.5	2.5	2.5	2.5	4	4	4	6	6	6	10	10	10
10	1.5	1.5	1.5	1.5	1.5	1.5	2.5	2.5	2.5	2.5	2.5	4	4	4	6	6	6	10	10	10	10	16
12.5	2.5	2.5	2.5	2.5	2.5	2.5	2.5	2.5	4	4	4	4	4	4	6	6	6	10	10	10	16	16
15	2.5	2.5	2.5	2.5	2.5	2.5	2.5	2.5	4	4	4	4	4	4	6	6	6	10	10	10	16	16
17.5	4	4	4	4	4	4	4	4	4	4	4	6	6	6	6	6	6	10	10	10	16	16
20	4	4	4	4	4	4	4	4	4	4	6	6	6	6	6	6	6	10	10	10	16	16
25	4	4	4	4	4	4	4	4	4	4	6	6	6	6	6	6	6	10	10	10	16	16
30	6	6	6	6	6	6	6	6	6	6	6	6	6	6	6	6	6	6	6	6	6	6
40	10	10	10	10	10	10	10	10	10	10	10	10	10	10	10	10	10	10	10	10	10	10
50	16	16	16	16	16	16	16	16	16	16	16	16	16	16	16	16	16	16	16	16	16	16

SUBMERSIBLE PUMPSET CABLE SELECTION CHART FOR 220 Volts - SINGLE PHASE - 50 Hz

0.5	1.5	1.5	1.5	1.5	1.5	1.5	1.5	1.5	1.5	1.5	2.5	2.5	2.5	4	4	4	4	4	6	6	6	10
1	1.5	1.5	1.5	1.5	1.5	1.5	1.5	1.5	1.5	2.5	4	4	4	4	6	6	6	6	6	6	6	10
1.5	1.5	1.5	1.5	2.5	2.5	2.5	4	4	4	6	6	6	6	6	6	6	6	6	6	6	6	10
2	1.5	1.5	1.5	2.5	4	4	4	4	4	6	6	6	6	6	6	6	6	6	6	6	6	10
3	1.5	1.5	1.5	2.5	4	4	4	4	4	6	6	6	6	6	6	6	6	6	6	6	6	10
4	1.5	1.5	2.5	4	4	4	4	4	4	6	6	6	6	6	6	6	6	6	6	6	6	10
5	2.5	2.5	4	4	4	4	4	4	4	6	6	6	6	6	6	6	6	6	6	6	6	10

Note : 1. HP 7.5D and above are STAR/DELTA motors.

2. For STAR DELTA Starting reduce current by 1/3 for selecting suitable cable.

Conversion Table :

1 m = 3.28ft.

1 ft = 0.305 m

SINGLE PHASE :

For other voltages the cable size is to be selected as follows :-

Calculated length = (220 ÷ Volt) x actual length

Example : For a 3 HP 460 volts motor and 100 metres actual cable length,

Calculated Length = (220 - 460) x 100 = 48m. The size of the cable to be selected for 48m from the chart is 4mm

THREE PHASE :

For other Voltages the cable size is to be selected as follows :-

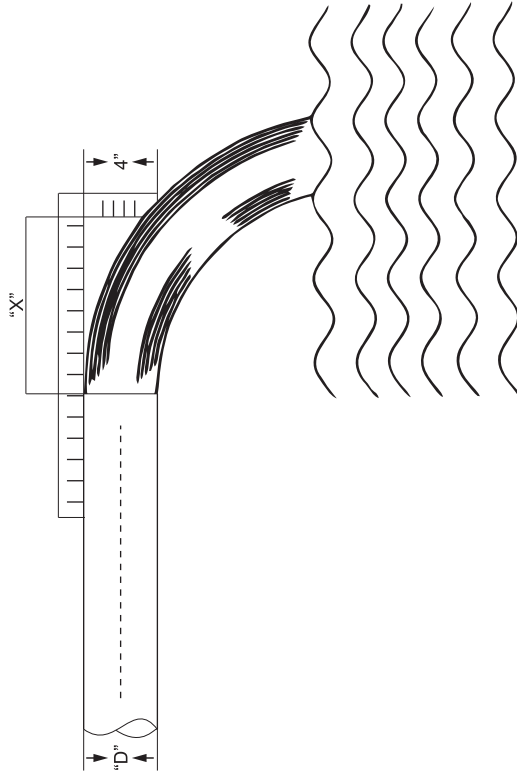
Calculated length = (415 ÷ Volt) x actual length.

Example : For a 20 HP Motor at 350 volts and 90 metres actual cable length, calculated length = (415 ÷ 350) x 90= 107m. The size of the cable to be selected for 107m from the chart is 6mm'.

DISCHARGE OUTPUT CHART

DISCHARGE RATE (LITRES PER SECOND)

HORIZONTAL DISTANCE "X" IN INCHES	NOMINAL PIPE DIAMETRE "D"								
	1"	1 1/4"	1 1/2"	2"	2 1/2"	3"	4"	5"	6"
4	0.4	0.7	1.0	1.7	2.3	3.7	6.3	9.8	14.4
5	0.5	0.9	1.3	2.1	3.0	4.6	7.9	12.5	18.2
6	0.6	1.1	1.5	2.5	3.6	5.5	9.5	14.8	21.6
7	0.8	1.3	1.8	3.0	4.2	6.4	11.0	17.4	25.3
8	0.9	1.5	2.0	3.3	4.7	7.4	12.6	19.7	28.8
9	1.0	1.7	2.3	3.8	5.3	8.3	14.1	22.3	32.5
10	1.1	1.9	2.5	4.2	5.9	9.2	15.7	24.6	35.9
11	1.2	2.0	2.8	4.6	6.5	10.1	17.3	27.2	39.7
12	1.3	2.2	3.0	5.0	7.1	11.1	18.9	29.5	43.1
13	1.4	2.4	3.3	5.4	7.6	12.0	20.4	32.2	46.9
14	1.5	2.6	3.5	5.8	8.2	12.9	22.0	34.1	50.3
15	1.6	2.7	3.8	6.3	8.9	13.8	23.6	37.1	53.7
16	1.7	3.0	4.0	6.7	9.5	14.8	25.2	39.3	57.5
17	1.8	3.1	4.3	7.1	10.1	15.7	26.7	42.0	61.3
18	1.9	3.3	4.5	7.5	10.6	16.6	28.3	44.6	64.7
19	2.0	3.5	4.8	7.9	11.2	17.6	29.9	46.9	68.5
→ 20	2.1	3.7	5.0	8.4	11.8	18.5	31.5	49.2	71.9
21	2.3	3.9	5.3	8.8	12.4	19.4	33.1	51.8	75.7
22	2.4	4.0	5.5	9.2	13.0	20.4	34.6	54.5	79.5
23	2.5	4.2	5.8	9.6	13.5	21.3	36.2	56.8	82.9
24	2.6	4.4	6.0	10.1	14.1	22.2	37.8	59.0	86.3
25	2.7	4.6	6.3	10.4	14.8	23.2	39.8	61.7	90.0
26	2.8	4.8	6.5	10.9	15.4	24.1	40.9	63.9	93.4
27	2.9	5.0	6.8	11.3	16.0	25.0	42.4	66.6	97.2
28	3.0	5.1	7.0	11.7	16.5	25.9	44.0		
29	3.1	5.3	7.3	12.1	17.1	26.8	45.6		
30	3.2	5.5	7.5	12.6	17.7	27.8	47.2		
31			7.8	12.9	18.3	28.7			
32			8.0	13.4	18.9	29.6			
33			8.2	13.8	19.4	30.5			
34			8.6	14.2	20.1	31.4			
35			8.8	14.7	20.7	32.4			
36			9.0	15.1	21.3	33.3			



EXAMPLE:

HORIZONTAL DISTANCE "X" = 20"
 NOMINAL PIPE DIAMETRE "D" = 2"
 DISCHARGE Q = 8.4 LPS (LITRES PER SECOND)

FRICTIONAL HEAD LOSS IN PLASTIC PIPES, in metres per 100 metres of pipe length

Discharge in LPM	Pipe size in mm(OD/ID)											
	25	32	40	50	63	75	90	110	125	140	160	180
	20.4	26.2	32.6	40.8	51.4	61.4	73.6	90	102.2	114.6	130.8	147.2
10	1.82	0.66	0.27	0.085								
	[0.509]	[0.3]	[0.19]	[0.12]								
15	4	1.14	0.6	0.18	0.63							
	[0.76]	[0.46]	[0.3]	[0.19]	[0.12]							
20	6.4	2.2	0.9	0.28	0.11							
	[1.01]	[0.61]	[0.39]	[0.25]	[0.16]							
25	9.96	3.5	1.4	0.43	0.17	0.074						
	[1.27]	[0.76]	[0.5]	[0.32]	[0.2]	[0.14]						
30	13	4.6	1.9	0.57	0.22	0.092						
	[1.53]	[0.92]	[0.6]	[0.38]	[0.24]	[0.17]						
35	16	6	2	0.7	0.27	0.12						
	[1.77]	[1.08]	[0.69]	[0.44]	[0.28]	[0.2]	[0.135]					
40	22	7.5	3.3	0.93	0.35	0.16	0.063					
	[2.04]	[1.24]	[0.8]	[0.51]	[0.32]	[0.23]	[0.16]					
50	37	11	4.8	1.4	0.5	0.22	0.09					
	[2.54]	[1.54]	[0.99]	[0.63]	[0.4]	[0.28]	[0.2]					
60	43	15	6.5	1.9	0.7	0.32	0.13	0.05				
	[3.06]	[1.85]	[1.2]	[0.76]	[0.48]	[0.32]	[0.24]	[0.16]				
70	50	18	8	2.5	0.83	0.38	0.17	0.068				
	[3.56]	[2.14]	[1.39]	[0.89]	[0.54]	[0.38]	[0.26]	[0.18]				
80		25	10.5	1.02	1.2	0.5	0.22	0.084				
		[2.44]	[1.59]	[1.02]	[0.64]	[0.45]	[0.31]	[0.2]				
90		30	12	3.5	1.3	0.57	0.26	0.092	0.05			
		[2.78]	[1.8]	[1.14]	[0.72]	[0.51]	[0.35]	[0.24]	[0.18]			
100		39	16	4.6	1.8	0.73	0.3	0.12	0.07			
		[3.1]	[2]	[1.28]	[0.8]	[0.56]	[0.39]	[0.26]	[0.2]			
125		50	24	6.6	2.5	1.1	0.5	0.18	0.1	0.055		
		[3.82]	[2.47]	[1.59]	[1]	[0.7]	[0.49]	[0.33]	[0.25]	[0.2]		
150			33	8.6	3.5	1.4	0.63	0.24	0.13	0.24		
			[3]	[1.91]	[1.2]	[0.84]	[0.59]	[0.39]	[0.3]	[0.24]		

FRICTIONAL HEAD LOSS IN PLASTIC PIPES, in metres per 100 metres of pipe length

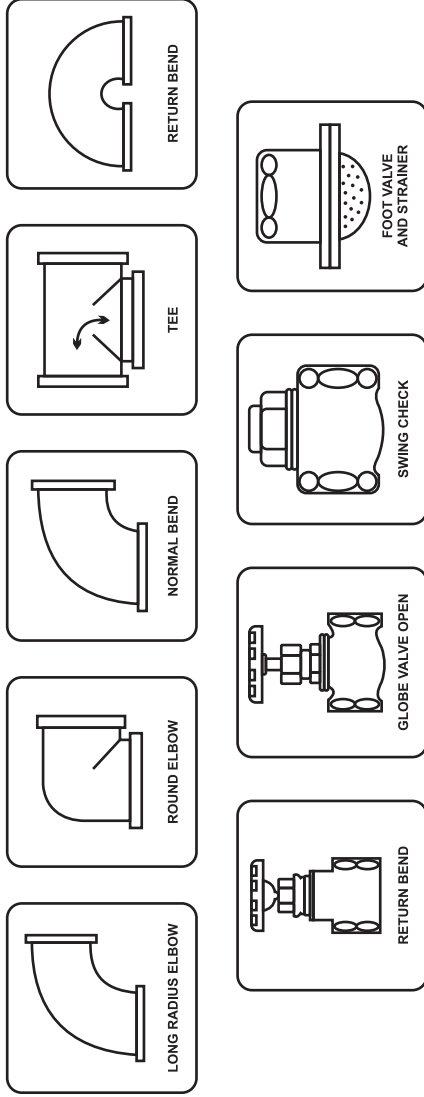
Discharge in LPM	Pipe size in mm(OD/ID)											
	25	32	40	50	63	75	90	110	125	140	160	180
	20.4	26.2	32.6	40.8	51.4	61.4	73.6	90	102.2	114.6	130.8	147.2
175			38	11	4.3	1.8	0.78	0.3	0.18	0.09		
			[3.5]	[2.23]	[1.41]	[0.99]	[0.69]	[0.46]	[0.36]	[0.28]		
200			50	14	5.5	2.4	1	0.4	0.22	0.12	0.065	
			[3.99]	[2.55]	[1.6]	[1.12]	[0.78]	[0.52]	[0.41]	[0.32]	[0.25]	
250				21	8	3.7	1.5	0.57	0.34	0.18	0.105	0.06
				[3.19]	[2.01]	[1.41]	[0.98]	[0.66]	[0.51]	[0.4]	[0.31]	[0.25]
300				28	10.5	4.6	1.95	0.77	0.45	0.25	0.13	0.085
				[3.82]	[2.41]	[1.69]	[1.18]	[0.78]	[0.61]	[0.48]	[0.37]	[0.29]
400					19	8	3.6	1.4	0.78	0.44	0.23	0.15
					[3.21]	[2.25]	[1.57]	[1.05]	[0.81]	[0.65]	[0.5]	[0.39]
500					28	11.5	5	2	1.2	0.63	0.33	0.21
					[4.01]	[2.81]	[1.96]	[1.31]	[1.02]	[0.81]	[0.62]	[0.49]
600					37	15	6.6	2.6	1.5	0.82	0.45	0.28
					[4.82]	[3.38]	[2.35]	[1.57]	[1.22]	[0.97]	[0.74]	[0.59]
700					47	24	8	3.5	1.9	1.1	0.6	0.4
					[5.64]	[3.95]	[2.75]	[1.84]	[1.43]	[1.13]	[0.87]	[0.69]
800						26	11	4.5	2.6	1.4	0.99	0.48
						[4.49]	[3.13]	[2.09]	[1.62]	[1.29]	[0.99]	[0.78]
900						33	13.5	5.5	3.2	1.7	1.12	0.58
						[5.06]	[3.53]	[2.36]	[1.83]	[1.45]	[1.15]	[0.88]
1000						40	16	6.7	3.9	2.2	1.2	0.75
						[5.6]	[3.93]	[2.63]	[2.04]	[1.62]	[1.24]	[0.96]
1250							25	9	5	3	1.6	0.95
							[4.89]	[3.27]	[2.54]	[2.02]	[1.55]	[1.22]
1500							33	13	8	4.1	2.3	1.4
							[5.87]	[3.93]	[3.05]	[2.42]	[1.86]	[1.47]

FRICTIONAL HEAD LOSS IN PLASTIC PIPES, in metres per 100 metres of pipe length

Discharge in LPM	Pipe size in mm(OD/ID)											
	25	32	40	50	63	75	90	110	125	140	160	180
	20.4	26.2	32.6	40.8	51.4	61.4	73.6	90	102.2	114.6	130.8	147.2
1750							44	17.5	9.7	5.7	3.2	1.9
							[6.55]	[5.08]	[4.04]	[3.1]	[2.45]	[1.712]
2000								23	13	7	4	2.4
								[5.23]	[4.06]	[3.23]	[2.48]	[1.96]
2500								34	18	10.5	6	3.5
								[6.55]	[5.08]	[4.04]	[6.31]	[2.45]
3000								45	27	14	7.6	4.4
								[7.86]	[6.1]	[4.85]	[3.72]	[2.94]
4000									43	24	13	7.5
									[8.13]	[6.47]	[4.96]	[3.92]
5000										33	18	11
										[8.08]	[6.2]	[4.76]

Values in bracket indicates Velocity in Metre/sec | The table is based on nomogram | Roughness = 0.01 mm

LENGTH OF STRAIGHT PIPE IN METRES GIVING EQUIVALENT HEAD LOSS IN PIPE FITTINGS, VALVES, Etc.



SIZE OF PIPE IN mm	STANDARD ELBOW	MEDIUM ELBOW	LONG RADIUS ELBOW	45° ELBOW	TEE	SLUICE VALVE FULL OPEN	GLOBE VALVE FULL OPEN	ANGLE VALVE OPEN	FOOT VALVE OR REFLUX VALVE
25	0.82	0.70	0.52	0.40	1.77	0.18	8.24	4.57	2.04
40	1.31	1.10	0.85	0.61	2.74	0.29	13.4	6.71	3.05
50	1.67	1.40	1.07	0.76	3.35	0.37	17.4	8.54	3.96
65	1.98	1.65	1.28	0.92	4.26	0.42	20.1	10.0	5.18
80	2.47	2.00	1.55	1.15	5.18	0.52	25.9	12.8	6.10
100	3.35	2.77	2.13	1.53	6.71	0.70	33.5	17.7	8.23
125	4.26	3.66	2.78	1.86	8.24	0.88	42.6	21.2	10.0
150	4.87	4.26	3.35	2.35	10.0	1.07	48.7	25.3	12.2
200	6.40	5.48	4.26	3.05	13.1	1.37	67.1	33.5	16.2
250	7.62	6.71	5.18	3.86	17.1	1.74	88.5	42.6	20.4
300	9.75	7.92	6.10	4.57	20.1	2.04	100.5	51.8	24.4

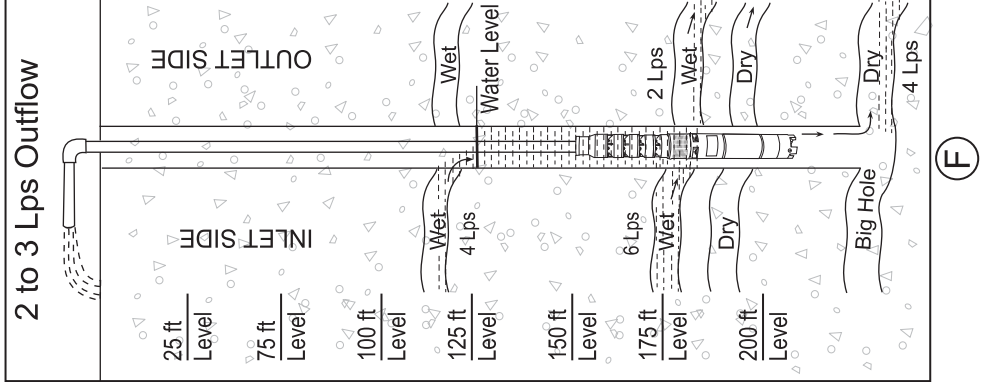
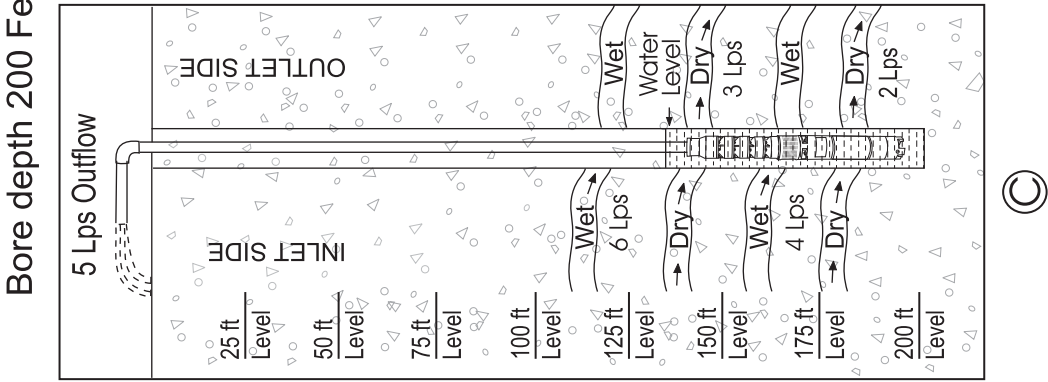
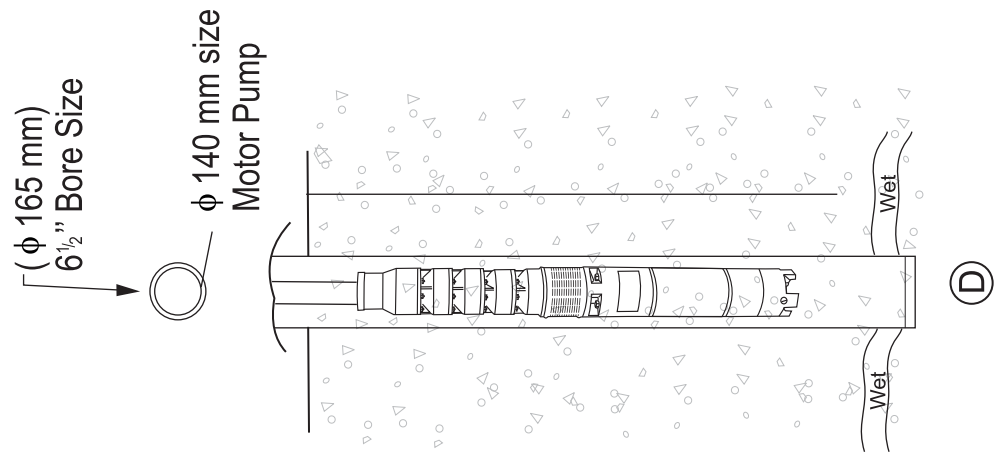
Single Phase Control Panel, 240 Volts \pm 10%, 50 Hz \pm 5%, AC Power Supply

Kw	HP	CAPACITOR (MFD)		Relay Range (A)	Rated Current (A)	MCB Rating (A)
		Sc	Rc			
0.37	0.5	80 - 100	30	4.5 - 6.5	4.5	6
0.55	0.75	80 - 100	36	6 - 10	5.4	10
0.75	1.0	100 - 120	40	6 - 10	7	16
1.1	1.5	100 - 120	60	9 - 14	9.5	16
1.5	2.0	200 - 250	80	13 - 19	12	25
2.2	3.0	200 - 250	90	18 - 25	18	32

PVC Insulated, 3 Core Submersible Flat Cables

Cable Size (SQ.MM)	No. of Strands	Insulation Thickness (mm)	Sheath Thickness (mm)	Over all Dimension (mm)		Resistance @ 20° C (OHMS/KM)	Cur. Car. Capacity (A)
				Width	Height		
SUBMERSIBLE CABLES							
1.5	22	0.6	0.9	11.0	5.0	12.1	14
2.5	36	0.7	1.0	13.0	6.0	7.41	18
4.0	56	0.8	1.0	15.3	6.7	4.95	26
6.0	84	1.0	1.15	18.7	7.9	3.3	31

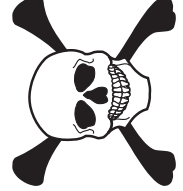
Examples show different combination of Wet and Dry cavities in a Bore well having maximum yield of 10 Lps in flow and pump capacity of maximum 10 Lps output



IMPORTANT (F)

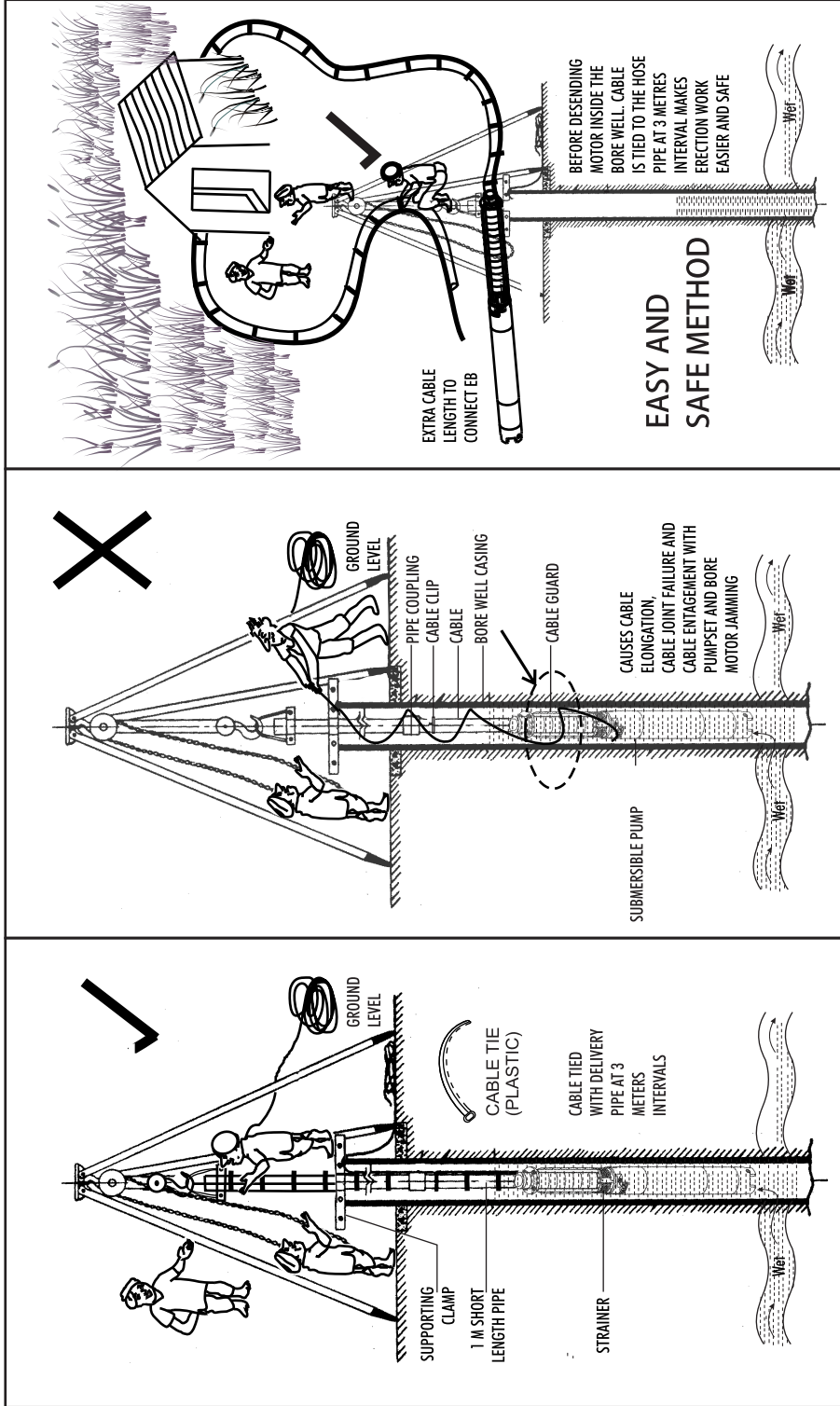


Note (Fig F): Incoming stream 10 Lps but there is a dry stream hole at the bottom of borewell having 4 Lps flow area. Hence when motor starts; 2 to 3 Lps will be pumped out (the water flowing down surrounding the pumpset will be pumped) but there is no stagnant water surrounding the motor. Hence it will heat up and burn after few days of running. This is not Manufacturer's defect but Bore well yield problem.



CAUTION

CABLE LAYING METHOD DURING ERECTION OF PUMPSET

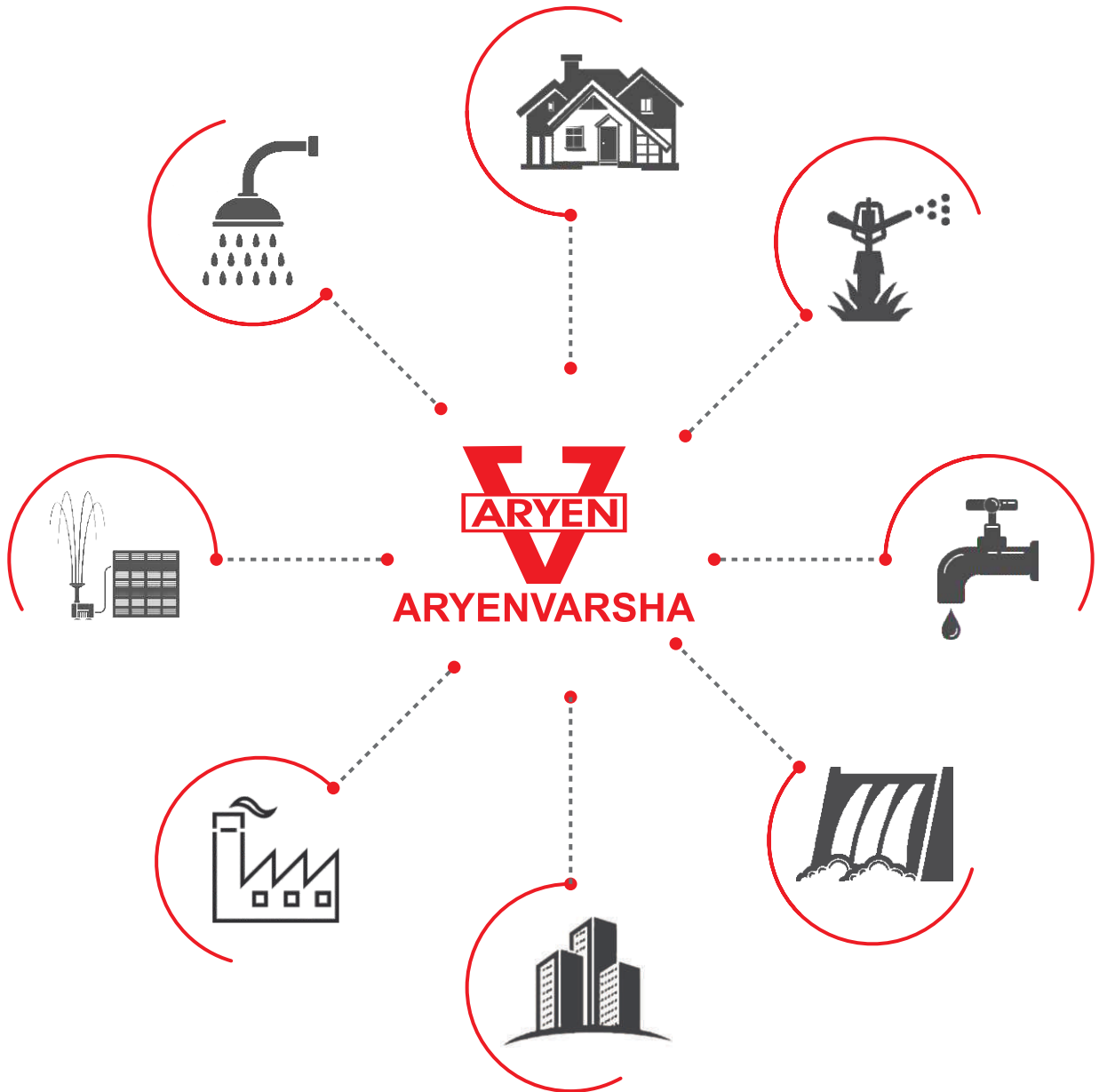


CABLE SELECTION

- Up to 2 HP : 1.5 Sq. mm for 200 m length cable use.
- 3 to 5 HP : 2.5 Sq. mm for 180 m length cable use above that 4 sq. mm to be used.
- 6 to 7.5 HP : 2.5 Sq. mm for 150 m and 4 Sq. mm for above it.
- 10 HP & ABOVE : Double Line 2.5 Sq. mm for 180 m long and 4 Sq. mm above it.







ARYEN PUMPS

One solution for all your needs





NOTES

A series of horizontal dotted lines for writing notes.



NOTES

A series of horizontal dotted lines for writing notes.

ARYENVARSHA BRANCHES

TELANGANA

Secunderabad - 040 27710872
040 30240536
040 27712427

ANDHRA PRADESH

Chittoor - 095855 29275
Vijayawada - 095855 29284

KARNATAKA

Bengaluru - 098809 44888

TAMILNADU

Coimbatore - 070923 67777

KERALA

070923 67777



ARYEN PUMPS



ARYEN MOTORS (INDIA) P. LTD.,

SF No. 128/1, Narashimmanaicken Palayam Post, Mettupalayam Road,
Coimbatore - 641 031. Tamilnadu. Mob : 095855 29272 | Ph : 0422 - 2460056
E-mail : aryenmotors@gmail.com | Web : www.aryenmotors.com